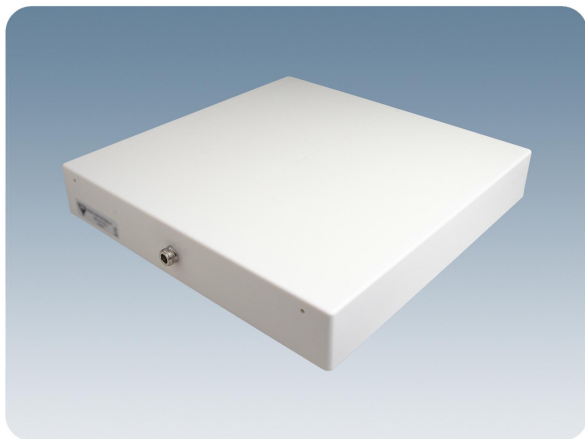


PCPI xH/TETRA/...

Indoor Left or Right Hand Circularly Polarized Patch Antennas for mounting on Wall or Ceiling

DESCRIPTION

- Low-profile antenna for the 380 - 470 MHz band.
- PCPI xH/TETRA/... is a Left or Right Hand Circularly Polarized patch antenna for indoor use.
- Circular polarization is chosen to avoid out-of-phase signals.
- Reduces flutter considerably.
- Specially designed for closed rooms.
- Covers approx. 50 MHz with a radiation of approx. 7 dBic.
- The antennas are carefully sealed with a discreet cover.
- The connector is placed at one side to enable mounting close to a wall or a ceiling.
- Including mounting bracket.
- Connection also available on backside (see overleaf).



STANDARD VERSION ORDERING DESIGNATIONS

| TYPE | FREQUENCY | PRODUCT NO. |
|-------------------|---------------|-------------|
| PCPI RH/TETRA/s-f | 380 - 430 MHz | 100000426 |
| PCPI LH/TETRA/s-f | 380 - 430 MHz | 100000425 |
| PCPI RH/TETRA/l-h | 430 - 470 MHz | 100000442 |
| PCPI LH/TETRA/l-h | 430 - 470 MHz | 100000441 |
| ACCESSORIES | | |
| PATCH-WAMO | | 100000511 |

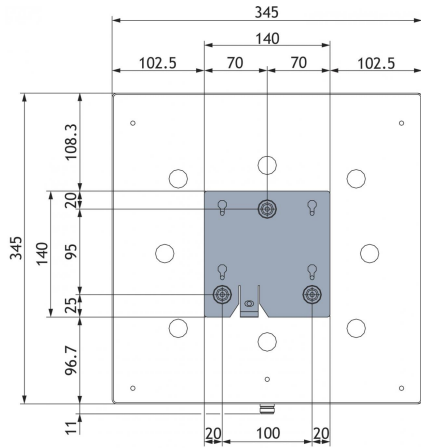
BACK CONNECTOR VERSION ORDERING DESIGNATIONS

| TYPE | FREQUENCY | PRODUCT NO. |
|----------------------|---------------|-------------|
| PCPI RH/TETRA/s-f-BC | 380 - 430 MHz | 100000468 |
| PCPI LH/TETRA/s-f-BC | 380 - 430 MHz | |
| PCPI RH/TETRA/l-h-BC | 430 - 470 MHz | |
| PCPI LH/TETRA/l-h-BC | 430 - 470 MHz | |

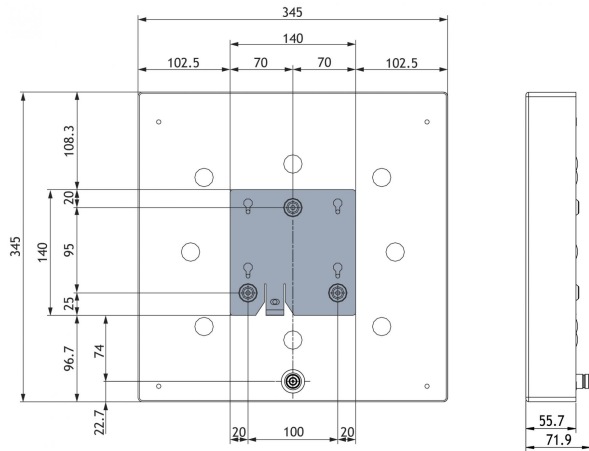
SPECIFICATIONS

| ELECTRICAL | |
|----------------------|---|
| MODEL | PCPI xH/TETRA/... |
| ANTENNA TYPE | Left or right hand circularly polarized patch antenna |
| FREQUENCY | 380 - 470 MHz covered by two models |
| IMPEDANCE | Nom. 50 Ω |
| POLARIZATION | Circular |
| GAIN | Approx. 7 dBic |
| BANDWIDTH | ≥ 50 MHz |
| HALF POWER BEAMWIDTH | Approx. 80° (H- and E-plane) |
| SWR | ≤ 2 |
| MAX. POWER | 100 W |
| MECHANICAL | |
| TEMP. RANGE | -30° C → +75° C |
| CONNECTOR | N-female |
| COLOUR | Marine white |
| MATERIALS | Cover: ABS (white) Chassis: Aluminium |
| SIZE (L x W x H) | Approx. 345 x 345 x 60 mm / 13.58 x 13.58 x 2.36 in. |
| WEIGHT | Approx. 2.3 kg / 5.07 lb. |
| MOUNTING | For mounting on wall or ceiling ø5 mm / 0.20 in. (three holes) (see mounting details) |

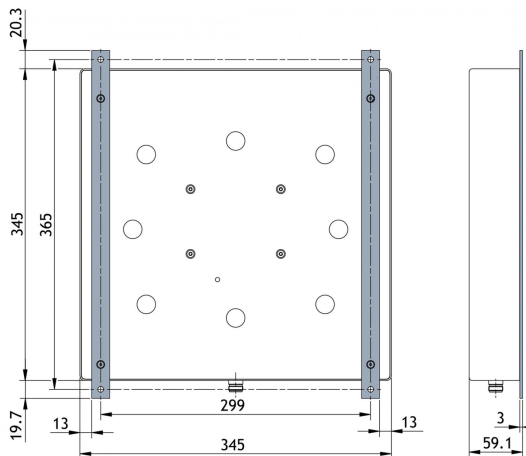
MOUNTING DETAILS (wall mounting bracket included)



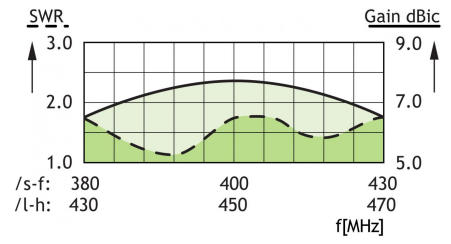
MOUNTING DETAILS BACK CONNECTOR VERSION (wall mounting bracket included)



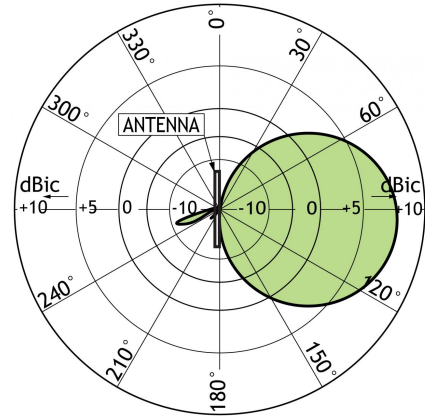
MOUNTING DETAILS PATCH-WAMO (ordered separately)



TYPICAL GAIN AND SWR CURVES

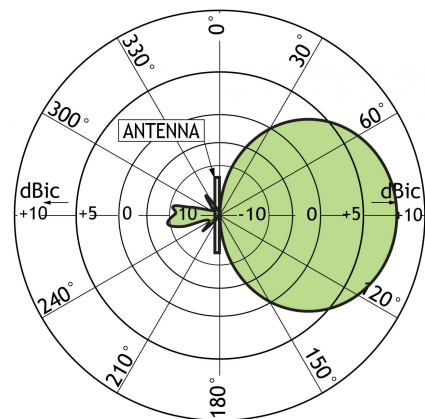


TYPICAL RADIATION PATTERN (E-PLANE)




This curve shows the radiation patterns in the vertical plane.

TYPICAL RADIATION PATTERN (H-PLANE)



This curve shows the radiation patterns in the horizontal plane (horizontal coverage).

 PROCOM A/S reserve the right to amend specifications without prior notice.
12/03/15