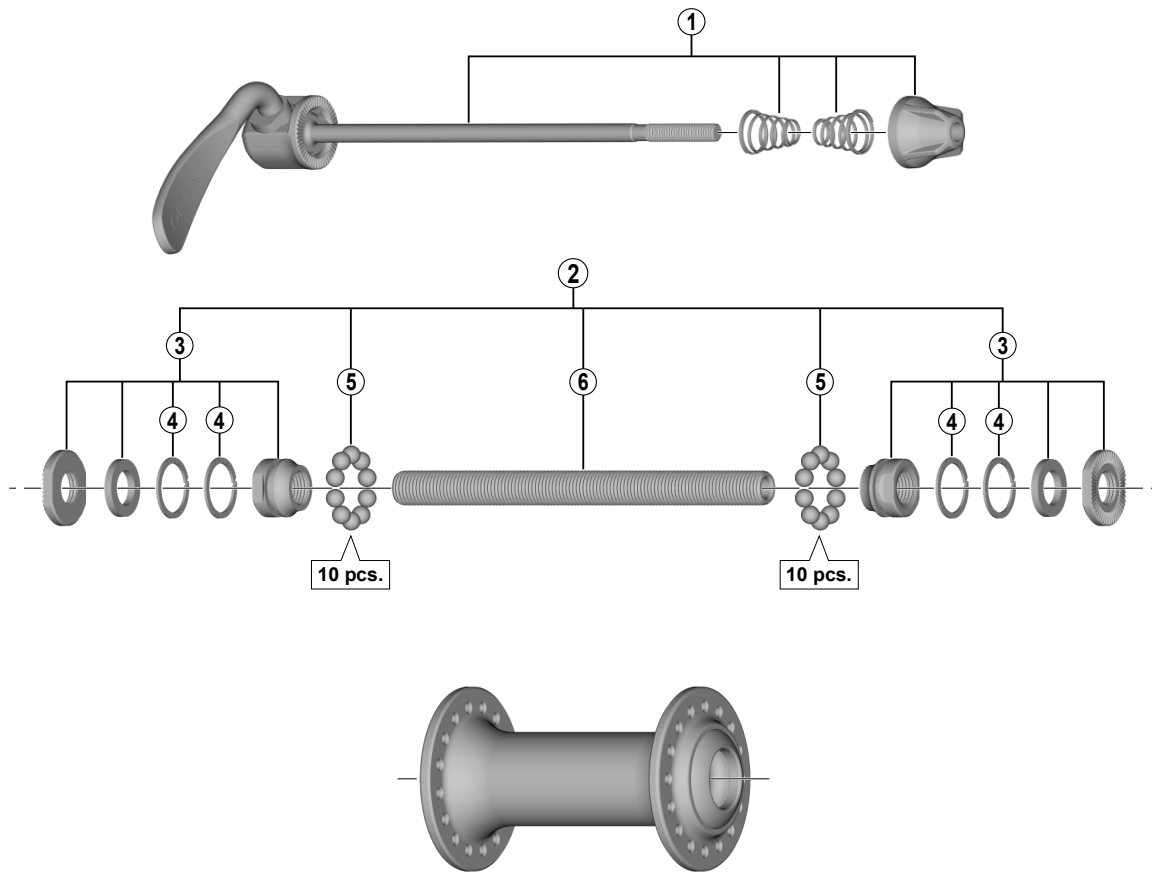


Front Hub HB-T3000



• Over Lock Nut Dimension: 100 mm (3-15/16")

ITEM NO.	SHIMANO CODE NO.	DESCRIPTION	INTERCHANGEABILITY		
			HB-RM70	HB-M3050	HB-M4050
* 1	Y2A398010	Complete Quick Release 133 mm (5-1/4")	A	A	B
2	Y2A298010	Complete Hub Axle 108 mm (4-1/4")	B	B	B
3	Y2A298020	Lock Nut Unit			
4	Y23603000	Seal Ring			
5	Y00091210	Steel Ball (3/16") 20 pcs.	A	A	
6	Y21C03100	Hub Axle M9 x 108 mm (4-1/4")	A		

A: Same parts.

B: Parts are usable, but differ in materials, appearance, finish, size, etc.

Absence of mark indicates non-interchangeability.

Mar.-2016-3891A

© Shimano Inc. I

Specifications are subject to change without notice.

SHIMANO