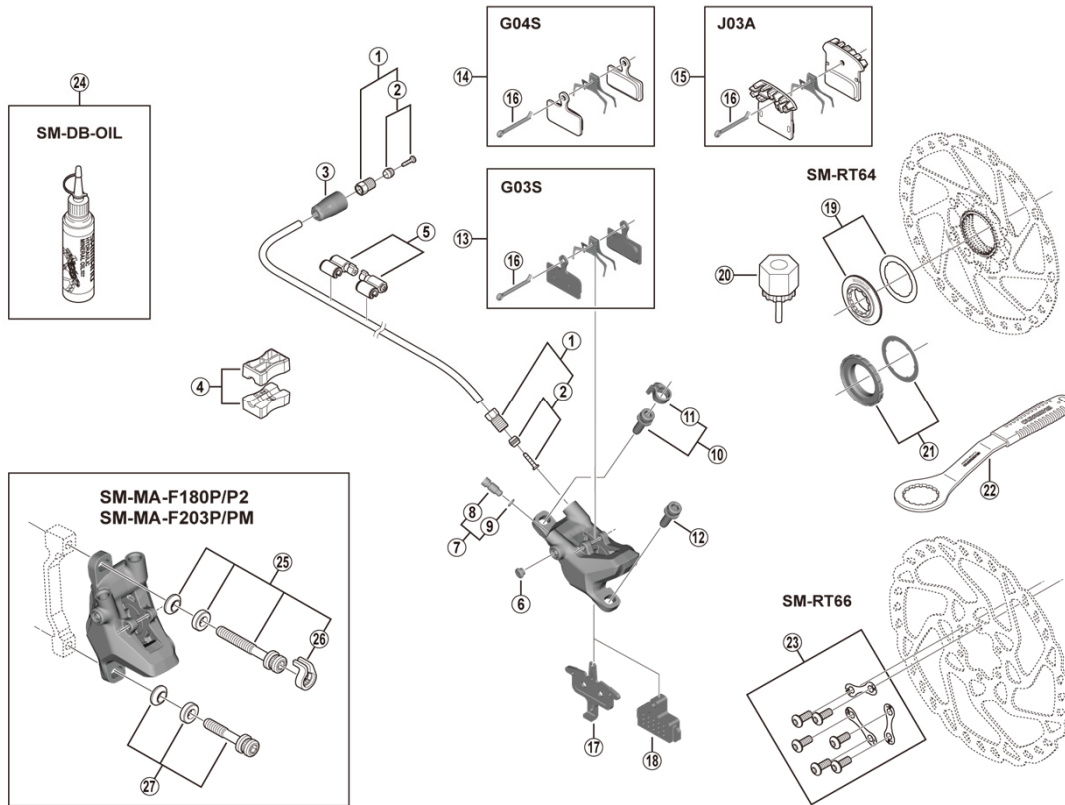


DEORE Disc Brake  
**BR-M6100** Brake Caliper  
**SM-BH90-SS** Brake Hose

**SM-RT64** Disc Rotor/Center Lock  
**SM-RT66** Disc Rotor/6-Bolt



ITEM NO.	SHIMANO CODE NO.	DESCRIPTION	INTERCHANGEABILITY	
			BR-M7100	SM-RT70
1	Y8JA98010	Flare Nut Unit	A	
2	Y8JA98020	Olive & Connector Insert	A	
3	Y8WM14000	Cover	A	
4	Y8H198030	TL-BH61 Shimano original tool (2 pcs.)	A	
5	Y83098040	SM-HANG Hose Supporter A & B	A	
6	Y88F06000	Bleed Boss Cap		
7	Y8LS98030	Bleed Screw & O-Ring		
8	Y8VZ07000	Bleed Screw		
9	Y8B511001	O-Ring		
10	Y2F398020	Caliper Fixing Screw (M6 x 18.7) & Snap Ring	A	
11	Y2RT06000	Snap Ring	A	
12	Y8C509020	Caliper Fixing Screw (M6 x 18.7)	A	
13	Y8WW98030	Resin Pad (G03S) & Spring w/Split Pin		
14	Y8MY98010	Metal Pad (G04S) & Spring w/Split Pin		
15	Y8Z298010	Resin Pad (J03A) w/Fin & Spring w/Split Pin		
16	Y8DB06100	Split Pin		
17	Y84E03000	Pad Spacer	A	
18	Y8J712100	Bleeding Spacer	B	
19	Y8K998010	Lock Ring & Washer		B
20	Y12009230	TL-LR15 Lock Ring Removal Tool		A
21	Y24698030	Lock Ring & Washer (External spline type)		A
22	Y13098000	TL-FC36 Lock Ring Removal Tool		A
23	Y8KT98010	Rotor Fixing Screw & Lock Washer		
24	Y83998020	Mineral Oil (100 ml)	A	
	Y83998030	Mineral Oil (500 ml)	A	
25	Y2RT98020	Caliper Fixing Screw Unit (M6 x 37.9) for SM-MA-F180P/P2	A	
	Y2RT98030	Caliper Fixing Screw Unit (M6 x 40.2) for SM-MA-F203P/PM	A	
26	Y2RT07000	Snap Ring	A	
27	Y8G498030	Caliper Fixing Screw Unit (M6 x 32.1) for SM-MA-F180P/P2	A	
	Y8J498020	Caliper Fixing Screw Unit (M6 x 34.4) for SM-MA-F203P/PM	A	

A: Same parts.

B: Parts are usable, but differ in materials, appearance, finish, size, etc.

Absence of mark indicates non-interchangeability.

Specifications are subject to change without notice.

May-2020-4661

© Shimano Inc. I

**SHIMANO**