

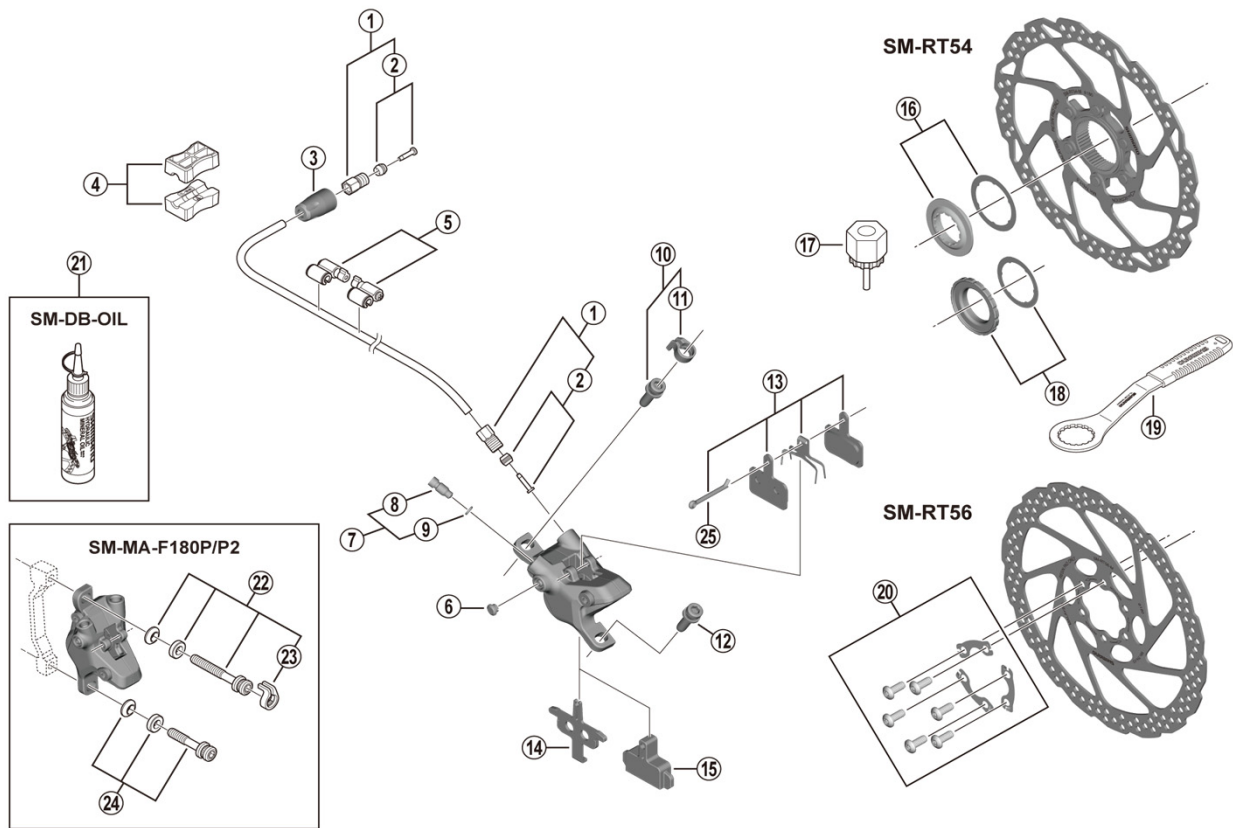
Disc Brake

BR-MT410 Brake Caliper

SM-BH59-JK-SS Brake Hose

SM-RT54 Disc Rotor/Center Lock

SM-RT56 Disc Rotor/6-Bolt



BR-MT400

ITEM NO.	SHIMANO CODE NO.	DESCRIPTION	INTERCHANGEABILITY
1	Y8M998010	Flare Nut Unit	A
2	Y8H298040	Olive & Connector Insert	A
3	Y8WM14000	Cover	A
4	Y8H198030	TL-BH61 Shimano original tool (2 pcs.)	A
5	Y83098040	SM-HANG Hose Supporter A & B	A
6	Y88F06000	Bleed Boss Cap	A
7	Y8LS98030	Bleed Screw & O-Ring	A
8	Y8VZ07000	Bleed Screw	A
9	Y8B511001	O-Ring	A
10	Y2F398020	Caliper Fixing Screw (M6 x 18.7) & Snap Ring	A
11	Y2RT06000	Snap Ring	A
12	Y8C509020	Caliper Fixing Screw (M6 x 18.7)	A
13	EBPB01SRESINA	Resin Pad (B01S) & Spring w/Split Pin 3 Type	A
14	Y8PE03000	Pad Spacer	A
15	Y8FZ05000	Bleeding Spacer	A
16	Y8K998010	Lock Ring & Washer	
17	Y12009230	TL-LR15 Lock Ring Removal Tool	A
18	Y24698030	Lock Ring & Washer (External spline type)	
19	Y13098000	TL-FC36 Lock Ring Removal Tool	A
20	Y8KT98010	Rotor Fixing Screw & Lock Washer	
21	Y83998020	Mineral Oil (100 ml)	A
	Y83998030	Mineral Oil (500 ml)	A
22	Y2RT98020	Caliper Fixing Screw Unit (M6 x 37.9)	A
23	Y2RT07000	Snap Ring	A
24	Y8G498030	Caliper Fixing Screw Unit (M6 x 32.1)	A
* 25	Y8DB06100	Split Pin	A

A: Same parts.

B: Parts are usable, but differ in materials, appearance, finish, size, etc.

Absence of mark indicates non-interchangeability.

Specifications are subject to change without notice.

Jul.-2020-4663A

© Shimano Inc. I

SHIMANO