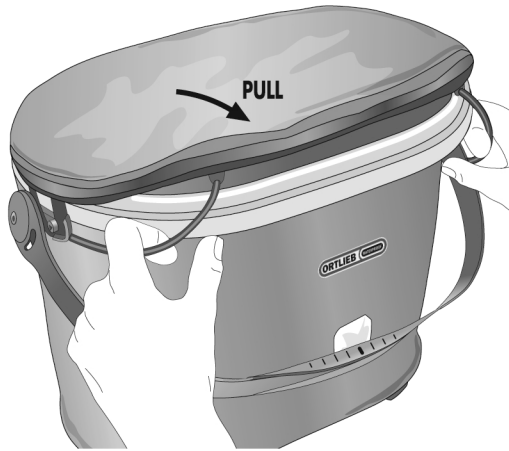


13



14

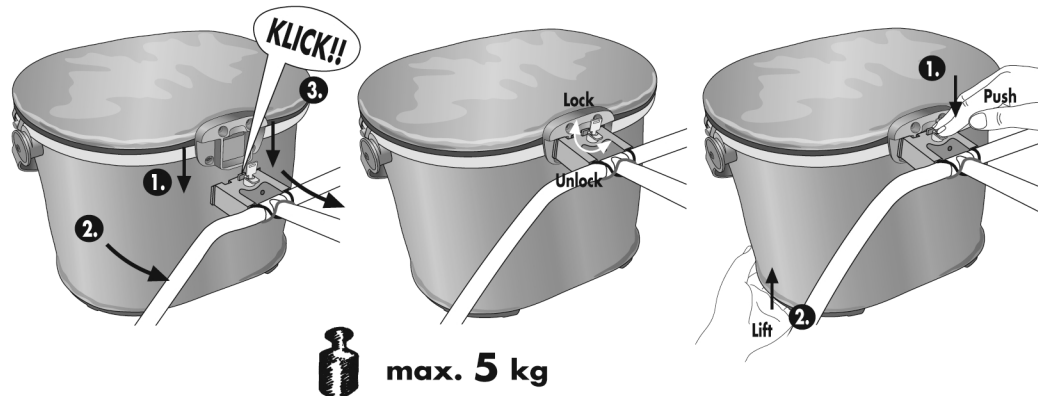


15



No Pets!

16

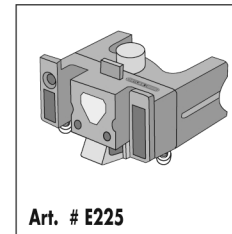


UP-TOWN

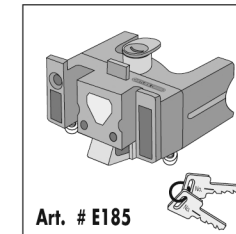
- DE MONTAGEANLEITUNG
- GB ASSEMBLY INSTRUCTIONS
- FR INSTRUCTIONS DE MONTAGE
- IT ISTRUZIONI DI MONTAGGIO
- NL MONTAGE HANDLEIDING
- DK MONTERINGSVEJLEDNING
- ES INSTRUCCIONES DE MONTAJE
- SE MONTERINGS ANVISNING
- NO MONTERINGS ANVISNING
- FI ASENNUSOHJEET
- PL INSTRUKCJA MONTAŻU
- JP 装着方法

ORTLIEB WATERPROOF

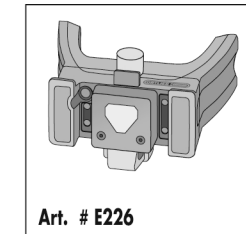

MOUNTING-SET REQUIRED

HANDLEBAR MOUNTING-SET


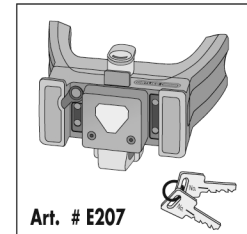
Art. # E225

HANDLEBAR MOUNTING-SET WITH LOCK


Art. # E185

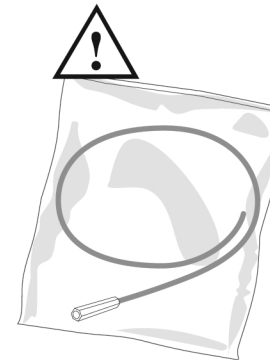
HANDLEBAR MOUNTING-SET E-BIKE


Art. # E226

HANDLEBAR MOUNTING-SET E-BIKE WITH LOCK


Art. # E207

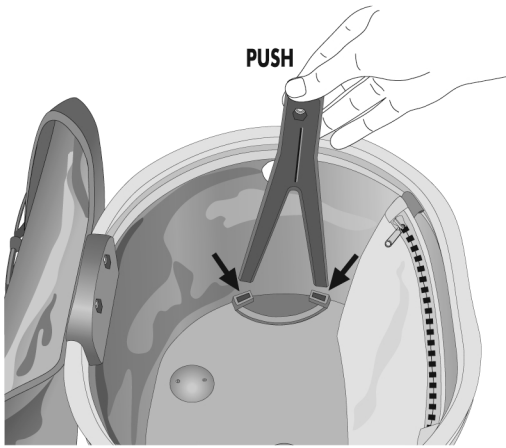
INHALT:
CONTENTS:
CONTENU:
CONTENUTO:
INHOUD:
INDHOLD:
CONTENIDO:
INNEHÅLL:
INNHOOLD:
SISÄLLYS:
ZAWARTOSC:
内容物



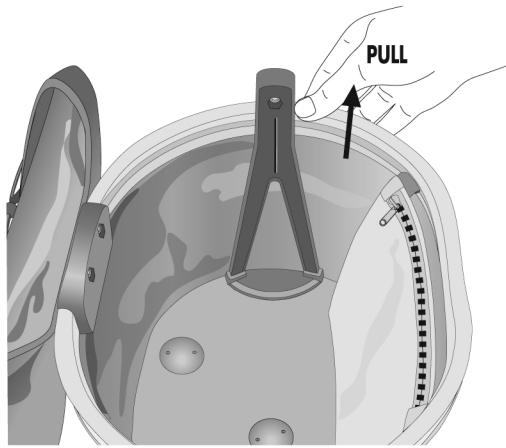
Grey Cable: ✓ = O.K.



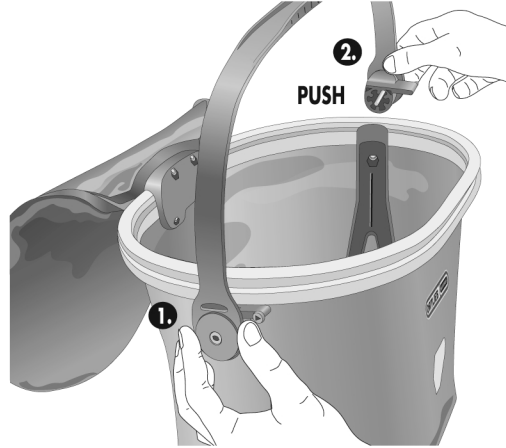
1



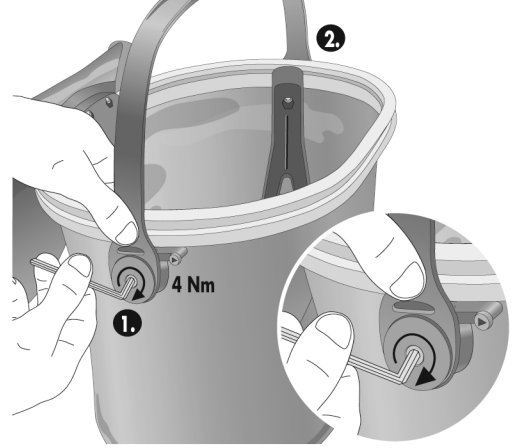
2



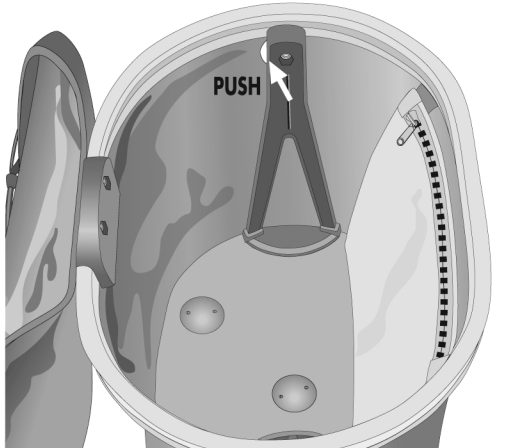
7



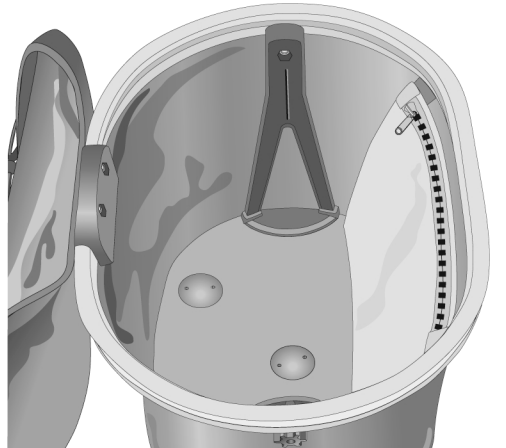
8



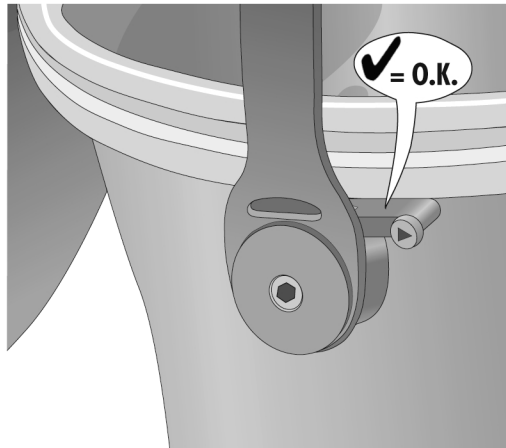
3



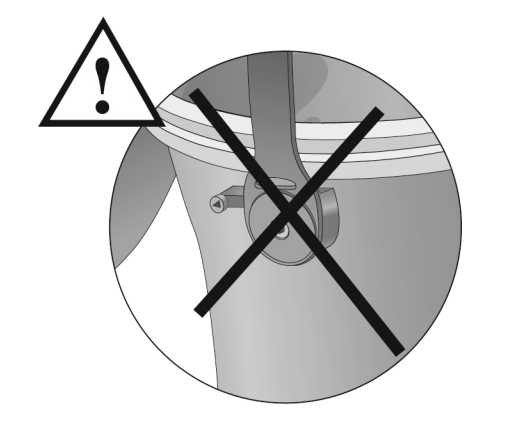
4



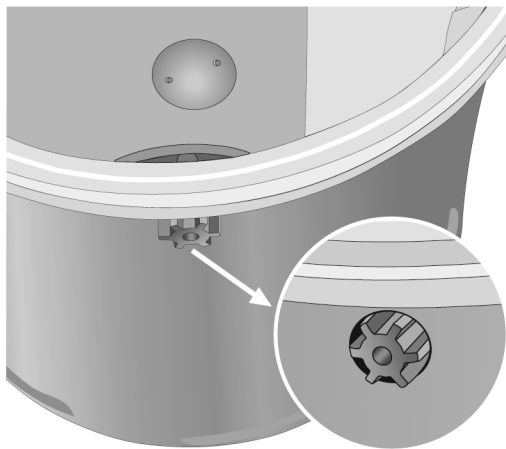
9



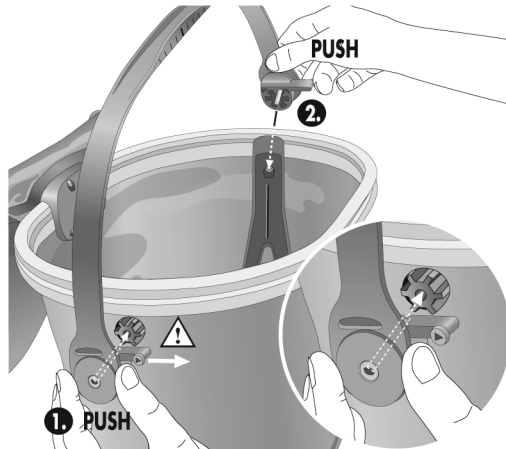
10



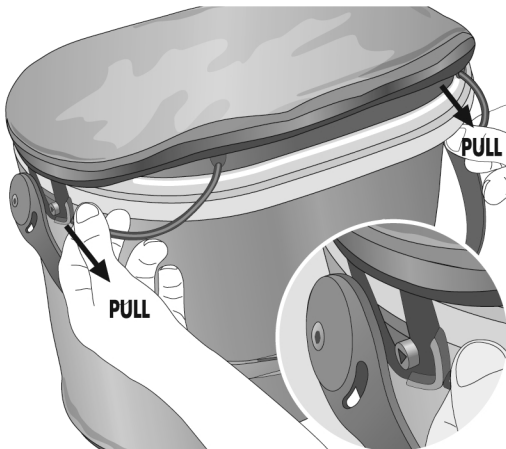
5



6



11



12

