



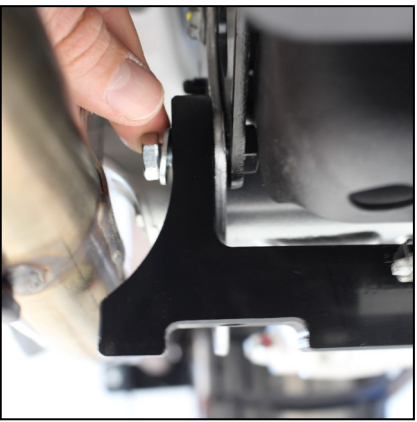
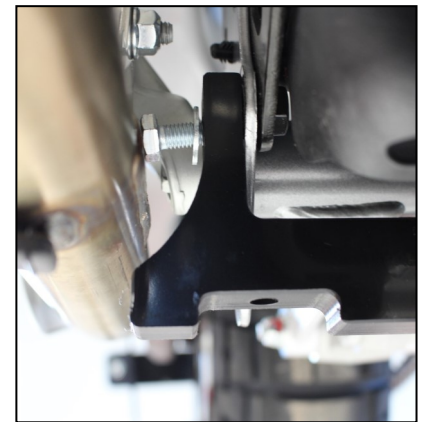
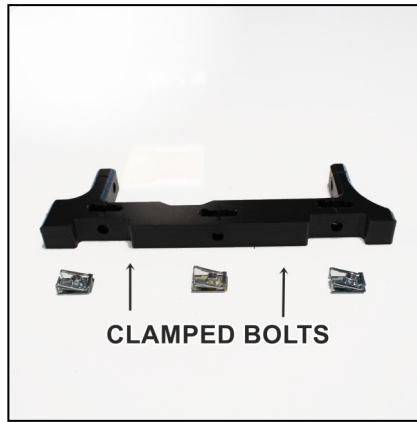
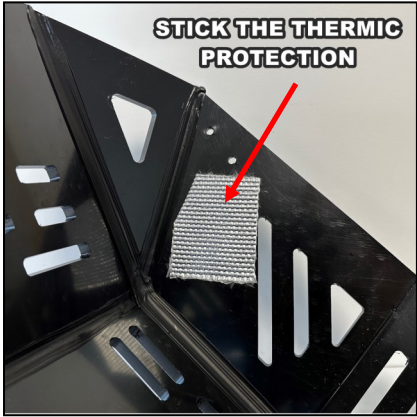
AX1690
ADVENTURE SKID PLATE
Aprilia Tuareg 660



- 2 NE01-02-005 - Tfhc 6x35mm
- 3 NE01-02-004 - Tfhc 6x30mm
- 2 NE01-06-028 - Th 6x35mm
- 2 NE01-03-006 - M6 large washers
- 2 NE01-02-002 - Tfhc 6x20
- 4 NE01-11-001 - Screws
- 7 NE01-03-002 - M8 Washers
- 2 NE01-02-003 - Tfhc 6x25mm
- 6 NE01-04-003 - Em6f
- 8 NE01-03-001 - M6 Washers
- 2 NE01-01-020 - Tbhc 6x50mm
- 9 NE01-04-002 - Clamped bolts
- 4 NE01-01-005 - Tbhc 8x35mm
- 1 NE01-01-006 - Tbhc 8x40mm
- 1 NE01-06-023 - Th 8x25mm
- 1 NE01-01-015 - Tbhc 10x40mm
- 1 NE01-03-004 - M10 Washer
- 1 NE01-01-017 - Tbhc 8x30mm
- 1 NE04-01-236 - Sticker
- 1 PM01-04-252
- 1 PM01-04-253
- 1 PM01-04-254
- 1 PM01-04-255
- 1 PM01-04-256
- 1 PM01-05-021
- 1 PM01-06-071 - Part N°45
- 1 PM02-07-027 - Stainlesssteel part
- 1 PM05-01-001 - Thermic sticker

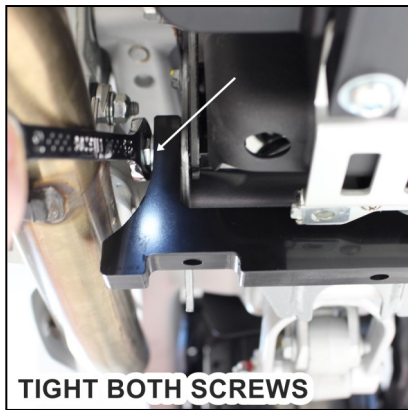


TUTORIAL VIDEO

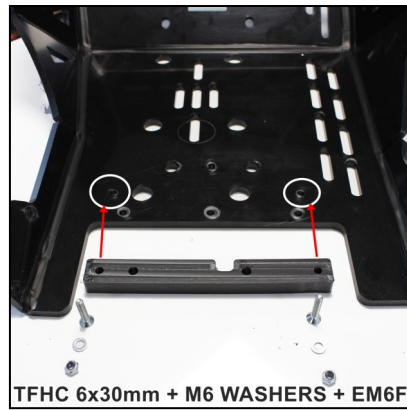




USE TBHC 8x30mm + M8 WASHER



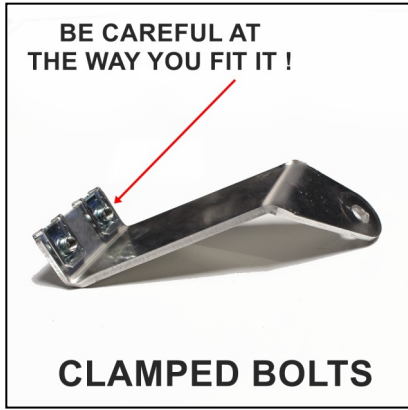
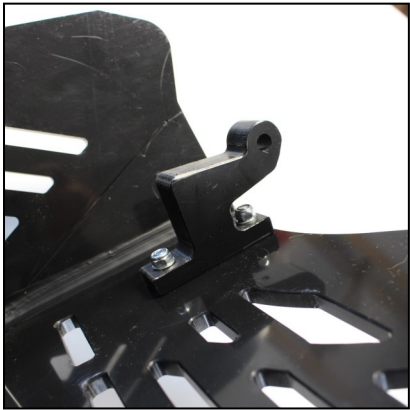
TIGHT BOTH SCREWS



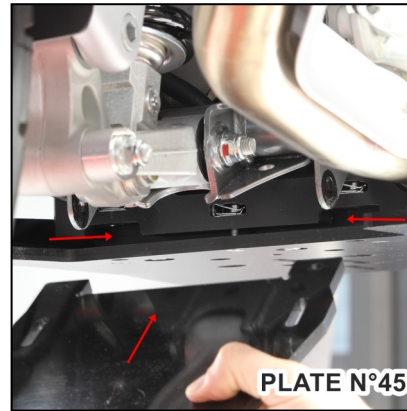
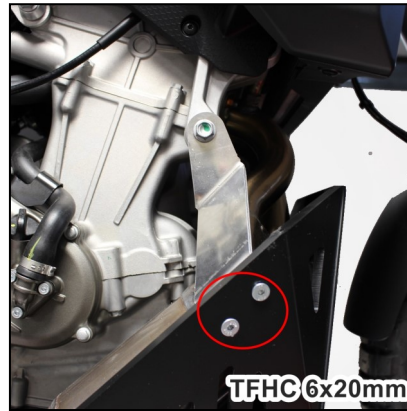
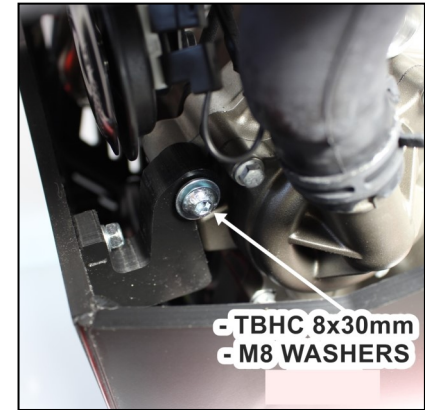
TFHC 6x30mm + M6 WASHERS + EM6F



TFHC 6x25 + M6 WASHER + EM6F



CLAMPED BOLTS



FOR A BETTER VISIBILITY, WATCH OUR YOUTUBE TUTORIAL VIDEO !

THIS SKID PLATE IS COMPATIBLE WITH SW MOTECH, HEPCO & BECKER , APRILIA AND OUTBAKC MOTORTEK CRASH BARS

FOR ANY QUESTION : contact@axpracing.com

