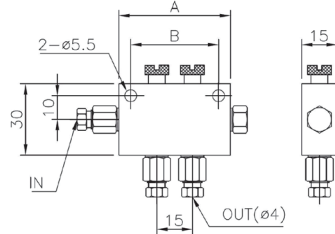
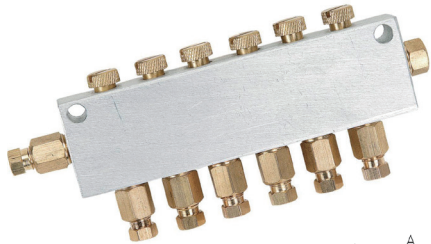
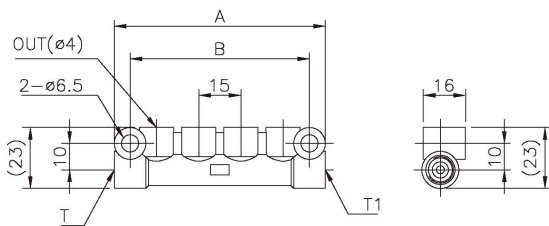


DV Serie Verteiler (einstellbar) DV Series Oil Regulating Distributor



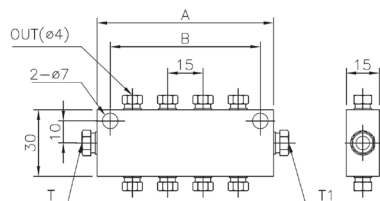
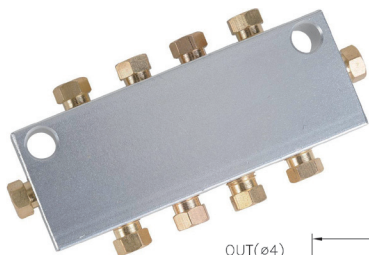
Artikel Item	Einlass Inlet Bore	Auslass Outlet	Einheit/Unit (mm)		Gewicht Weight (g)
			A	B	
DV024	Ø4	2	47	37	101
DV026	Ø6				
DV034	Ø4	3	62	52	131
DV036	Ø6				
DV044	Ø4	4	77	67	165
DV046	Ø6				
DV054	Ø4	5	92	82	194
DV056	Ø6				
DV064	Ø4	6	107	97	228
DV066	Ø6				
DV074	Ø4	7	122	112	255
DV076	Ø6				
DV084	Ø4	8	137	127	290
DV086	Ø6				
DV094	Ø4	9	152	142	321
DV096	Ø6				
DV0104	Ø4	10	167	157	355
DV0106	Ø6				

DB Serie Öl Verteilerleiste (einseitig) DB Series Oil Distributor



Artikel Item	T/T1	Auslass Outlet	Einheit/Unit (mm)		Gewicht Weight (g)
			A	B	
DB041	Ø4/Ø4	2	48	35-36	59
DB042	Ø4/Ø6				
DB043	Ø6/Ø6	3	64	52	76
DB051	Ø4/Ø4				
DB052	Ø4/Ø6	4	80	68	96
DB053	Ø6/Ø6				
DB061	Ø4/Ø4	5	96	84	113
DB062	Ø4/Ø6				
DB063	Ø6/Ø6	6	112	95-100	135
DB071	Ø4/Ø4				
DB072	Ø4/Ø6	7	128	116	145
DB073	Ø6/Ø6				
DB081	Ø4/Ø4	8	144	132	164
DB082	Ø4/Ø6				
DB083	Ø6/Ø6	10	176	164	201
DB091	Ø4/Ø4				
DB092	Ø4/Ø6	10	176	164	201
DB093	Ø6/Ø6				
DB101	Ø4/Ø4	10	176	164	201
DB102	Ø4/Ø6				
DB103	Ø6/Ø6	12	112	99	159
DB121	Ø4/Ø4				
DB122	Ø4/Ø6	12	112	99	159
DB123	Ø6/Ø6				

DE Serie Öl Verteilerleiste (zweiseitig) DE Series Oil Distributor



Artikel Item	T/T1	Auslass Outlet	Einheit/Unit (mm)		Gewicht Weight (g)
			A	B	
DE041	Ø4/Ø4	4	48	36	70
DE042	Ø6/Ø4				
DE043	Ø6/Ø6	6	64	52	92
DE061	Ø4/Ø4				
DE062	Ø6/Ø4	8	80	68	116
DE063	Ø6/Ø6				
DE081	Ø4/Ø4	10	96	84	138
DE082	Ø6/Ø4				
DE083	Ø6/Ø6	12	112	99	159
DE101	Ø4/Ø4				
DE102	Ø6/Ø4	12	112	99	159
DE103	Ø6/Ø6				
DE121	Ø4/Ø4	12	112	99	159
DE122	Ø6/Ø4				
DE123	Ø6/Ø6				