

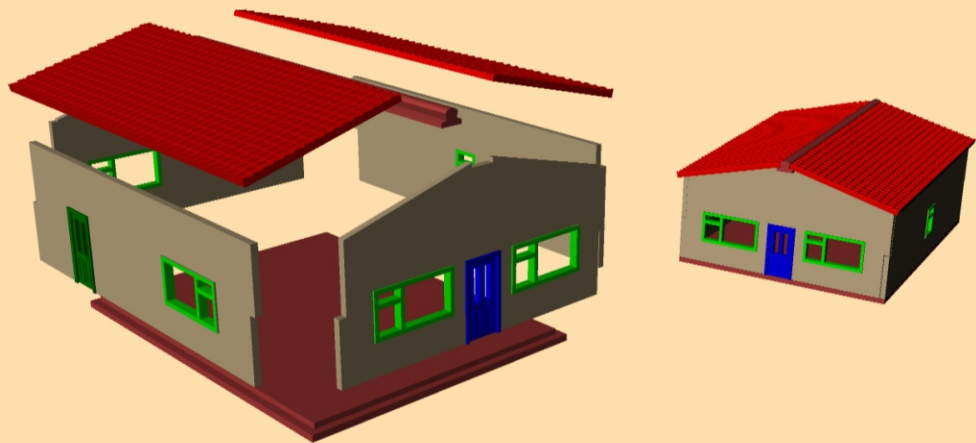
# N-Train

Bob Davies

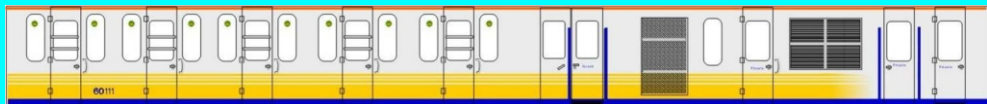
Good things come in small packages

[www.n-train.net](http://www.n-train.net)  
[www.facebook.com/pages/N-Train](https://www.facebook.com/pages/N-Train)  
[www.shapeways.com/shops/ntrain](http://www.shapeways.com/shops/ntrain)

## 10th ANNIVERSARY



## SHOW EDITION



Working with  
**ElectraRail Graphics**   
[electrarail.co.uk](http://electrarail.co.uk)

to produce a number of EMU kits.  
Also, various accessory kits, to compliment your layout.

Contact - [bob@n-train.co.uk](mailto:bob@n-train.co.uk)

August 2011

# No-Frills Kits Tube Stock

Photographs of real trains used, for illustration purposes.

## 1938

The kit consists of four bodies four dummy floors with moulded interpretation of underfloor equipment and seats.



**£50**

## 1992

The kit consists of four bodies four dummy floors with moulded interpretation of underfloor equipment and seats.



**£55**

## 1959

The kit consists of four bodies four dummy floors with moulded interpretation of underfloor equipment and seats.



**£50**

## S7

The kit consists of seven bodies seven dummy floors with moulded interpretation of underfloor equipment and seats.



**£110**

## A60/62

The kit consists of four bodies four dummy floors with moulded interpretation of underfloor equipment and seats.



**£70**

## Class483

The kit consists of two bodies two dummy floors with moulded interpretation of underfloor equipment and seats.



**£30**

## D78

The kit consists of four bodies four dummy floors with moulded interpretation of underfloor equipment and seats.



**£70**

## DLR

The kit consists of two bodies only



**£30**

# No-Frills Kit

# EMU's

Photographs of real trains used, for illustration purposes.

## Class 205

Includes three bodies,  
three dummy chassis  
and three underframes



## Class 313

Includes three bodies,  
three dummy chassis  
and three underframes



## Class 314

Includes three bodies,  
three dummy chassis  
and three underframes



## Class 315

Includes three bodies,  
three dummy chassis  
and three underframes



## Class 319

Includes four bodies,  
four dummy chassis  
and four underframes



## Class 325

Includes four bodies,  
four dummy chassis  
and four underframes



## Class 365

Includes four bodies,  
four dummy chassis  
and four under body boxes



## Class 395

Includes five bodies,  
five dummy chassis  
and five under body boxes



## Class 465

Includes four bodies,  
four dummy chassis  
and four under body boxes



## Class 466

Includes two bodies,  
two dummy chassis  
and two under body boxes



## Class 507

Includes three bodies,  
three dummy chassis  
and three underframes



## Class 508

Includes three bodies,  
three dummy chassis  
and three underframes



## Class 508

Includes four bodies,  
four dummy chassis  
and four underframes



**Prices**

**2 Car Units £45.00**

**3 Car Units £65.00**

**4 Car Units £85.00**

**5 Car Units £99.00**

**+ p&p**

# 3D Printed Cabs etc

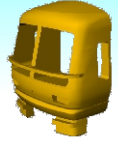
**Class 104**

£5



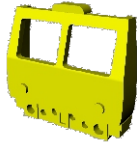
**Class 165**

£6



**Class 105**

£5



£5

**Generic Underframes**



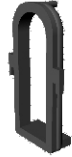
**Class 110**

£5



**Mk 1 DMU Corridors**

£5



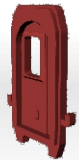
**Class 310/312**

£6



**Mk 1 EMU Corridors**

£5



**Class 302**

£5



**Mk 1 EMU Cab**

£5



**Class 307**

£5



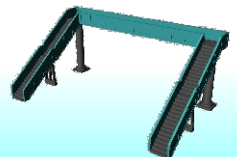
**Class 414**

£5



**Mk 2 DBSO**

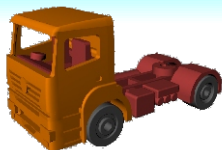
£5



I have a passing interest in lorries, from a design perspective.  
I decided to produce a number of kits based on a few specific prototypes.  
However, the range seems to be growing.....

**'Axor'**  
**4 x 2**  
**Day Cab**

**£6**



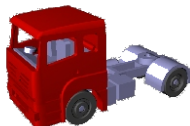
**'Axor'**  
**Rigid**

**£10**



**'Axor'**  
**4 x 2**  
**Night Cab**

**£6**



**Econic**  
**Refuse**

**£10**



**'Axor'**  
**4 x 2**  
**Hi Top**

**£6**



**DAF CF**  
**4 x 2**

**£6**



**'Axor'**  
**Skip**

**£9**



**MAN TG**  
**6 x 4**

**£7**



**'Axor'**  
**6 x 4**  
**Night Cab**

**£7**



**Alvis**  
**Stalwart**

**£7**



**'Axor'**  
**6 x 4**  
**Hi Top**

**£7**



**K120**  
**Tractor**

**£7**



**Glazing**



Following painting.  
Allow time for the paint to dry thoroughly.

Wrap clear tape around the exterior of the window openings.

Fill the window cavity with Micro Krystal Klear, or Glue n Glaze.

Use a cocktail stick to pop any air bubbles.



Leave overnight, to allow the glue to set.

It will change from milky white to clear when ready.

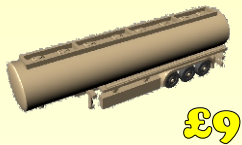
Remove the clear tape carefully.

You now have a glazed cab.



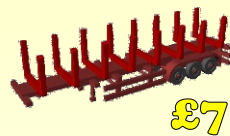
Trailers are designed to connect to my range of articulated cabs. They also connect to the Tomytec articulated lorries and Oxford Diecast. Allowing flexibility of units and variety in your collection.

**Tanker**



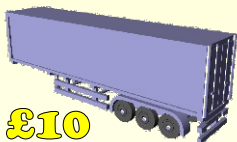
£9

**Log**



£7

**Box**



£10

**Short Box**



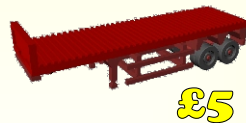
£8

**Grain**



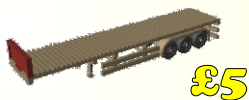
£9

**Short Flat**



£5

**Flat**



£5

**Short Chemical**



£7

**Curtain**



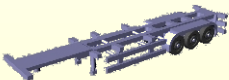
£10

**Short Grain**



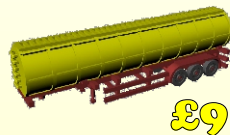
£7

**Container**



£5

**Chemical**



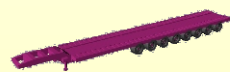
£9

**Low Loader**



£8

**Train Low Loader**



£17

Having got some trains and lorries, I started thinking about other transport and accessories. Somehow, the range started to grow.....



**'Citaro'  
Bendy Bus**  
£18

**'Enviro'  
400**  
£16



**'Citaro'  
Front door**  
£11

**Leyland  
Titan**  
£14



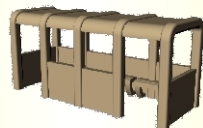
**'Citaro'  
Dual door**  
£11

**Transit  
Mini Bus**  
£5

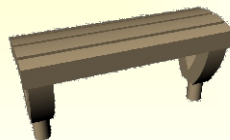


**Optare  
Solo**  
£8

**Bus Shelter  
x 2**  
£5

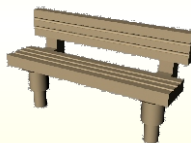
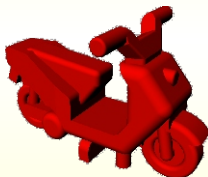


**Motorbike  
x 5**  
£5



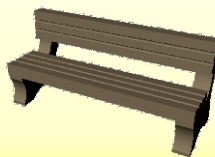
**Seats  
x 5**  
£5

**Moped  
x 5**  
£5



**Seats  
x 5**  
£5

**Information  
Panel x 4**  
£5



**Seats  
x 5**  
£5

A White Van Man Range of vehicle seemed appropriate.

**SWB**

£5



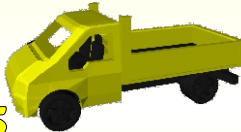
**LWB**

£5



**SWB  
Pickup**

£5



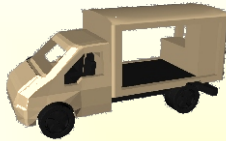
**LWB  
Pickup**

£5



**SWB  
Milk Float**

£5



**Ambulance**

£6



**SWB  
Ice Cream**

£6



**Motor  
Caravan**

£6



**Luton**

£6



**Range  
Rover 2005**

£5



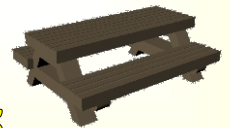
**Thwaites  
Dumper**

£5



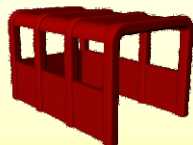
**Picnic  
Bench**

£5



**Trolley  
Park**

£5



**Rubbish  
Bins**

£5





Having done the White Vane Man range, I was rather taken with the clean lines of the Mitsubishi Fuso range of vehicles. I couldn't resist.

**SWB**  
**Box**  
£5



**LWB**  
**Box**  
£6



**SWB**  
**Box**  
£5



**LWB**  
**Box**  
£6



**SWB**  
**Fridge**  
£5



**LWB**  
**Fridge**  
£6



**SWB**  
**Pickup**  
£5



**LWB**  
**Pickup**  
£6



**N-Wheelz**

14.9mm Pinpoint axle.  
Wheels - Brass  
Axle - Steel  
Insulated on both sides  
Chemically blackened

Made in China  
6.2 mm Disc Wheels  
6.2 mm 3 Hole Wheels  
5.1 mm Disc Wheels

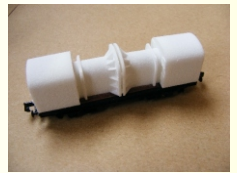
£10 £19 £37  
10 axles 20 axles 40 axles

*Subject to availability*

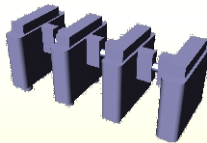
Structure Gauging Train  
**Optical Car**

Body conversion kit for  
Graham Farish  
VBA chassis

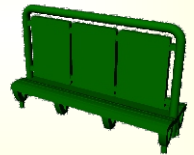
£12



**Ticket**  
**Barrier**  
£5



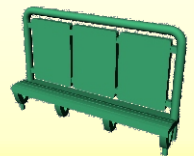
**Platform**  
**Seating**  
£5



**Ticket**  
**Machine**  
£5



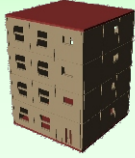
**Platform**  
**Seating**  
£5



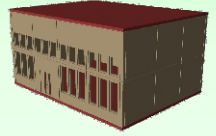
# The Future

Some idea I have had for a future range of buildings. Others, just waiting to happen.

**Block of Flats**



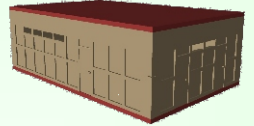
**Retail Unit**



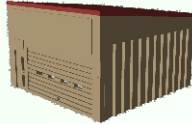
**Tower Block**



**Toilet Block**



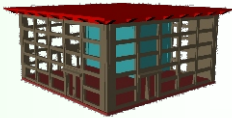
**Small Workshop**



**Bungalow**



**Station Hall**



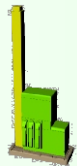
**Small Shop**



**660l Bin**



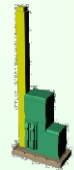
**3 Nozzle Pump**



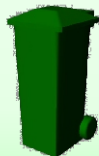
**240l Bin**



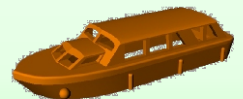
**2 Nozzle Pump**



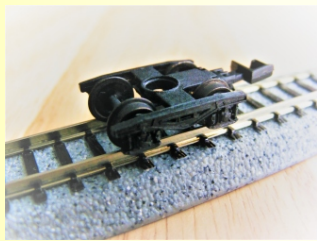
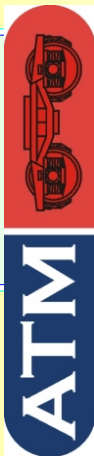
**140l Bin**



**Cabin Cruiser**

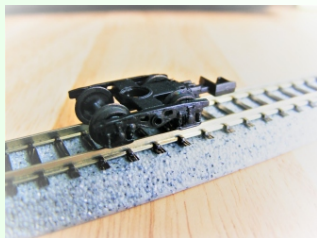


£5 per pair



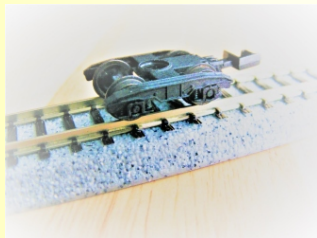
### 1801C

Y25 fabricated frame bogies  
NEM pocket, mouldings only



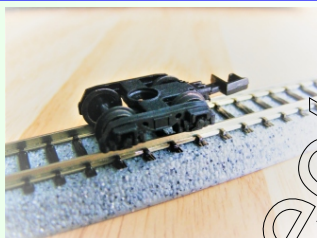
### 1802C

Y25 cast frame bogies  
NEM pocket, mouldings only



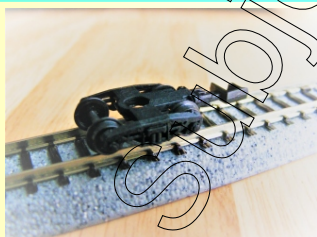
### 1803C

Gloucester GPS22 bogies  
NEM pocket, mouldings only



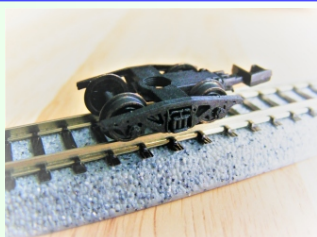
### 1804C

NACCO axle motion bogies  
NEM pocket, mouldings only



### 2001C

Ride Control bogies  
NEM pocket, mouldings only



### 2002C

English Steel ESC-1 bogies  
NEM pocket, mouldings only

# No-Frills Kits

Consisting of just bodies and dummy chassis.

In the cases of EMU's there will also be underframes  
While underground stock will have moulded interpretation of underframes and seating.

## A potted update.

I attended the first N Gauge Show (2006), at Leamington Spa as a visitor, wandering round the stalls and layouts and having a good time.

At this time, I was having on-line discussions with various people about producing some possible EMU kits. My personal interest was for a Class 365. What resulted was me learning CAD and starting N-Train and several of us booking a 6ft table at the 2nd N Gauge Show (2008).

Two of that original merry gang have stuck together and have attended every N Gauge Show since. *No we are no longer a 6ft table!*

*Just as I was getting ready to print these catalogues, one of my suppliers announced a 10% increase in price. This will effect some of my kit costs and will mean I will have no choice but to revise my prices in October.*

## Suggested Tomytec Motorised Chassis

Tube Trains  
1959/1938 TM-05R  
1992 TM-10R

Surface Stock  
D78 TM-06R  
A60/62 TM-07R

All EMU's  
TM-18R

## Future Plans

Class 456 bodies and underframes

Class 317 - Class 318

Also looking at a range of buildings.

All of these are in varying stages of development



ElectraRail Graphics  
electrarail.co.uk

