



MC 1050-20TF

FEED TRACK CONVEYOR



 YouTube

SEARCH

IMS MC1050-20TF



A leading manufacturer of screening and conveyor equipment, offer the MC1050-20TF Feed tracked stacking conveyor, ensuring regular & consistent feed the MC1050-20TF is the ideal solution for jobs that require high production stockpiling or material transfer



Heavy Duty Construction

Constructed from 5mm thick MS plate designed in 500mm deep section to give added stability and to withstand the rigours of heavy duty operation.

Feed Hopper

8 cubic metre capacity feed hopper with 4.5m wide target area to accept most loaders. Hopper lined with 6mm MS wear plates.

1050mm wide belt feeder with impact rollers, heavy duty belt and variable speed control.

Discharge Conveyor

The conveyor is constructed in 3 sections, the tail section includes a standard reception hopper and the head section includes the conveyor drive, consisting of 2 Sauer-Danfoss hydraulic motors and rubber lagged drive pulley. The belt width is 1050mm and the overall length of the discharge conveyor is 20m.

Diesel-Hydraulic Power

The conveyor is powered by a 74 kw Diesel Engine coupled to a triple hydraulic pump giving sufficient oil flow to drive the variable speed belt feeder, the main discharge conveyor and the crawler tracks.

Undercarriage

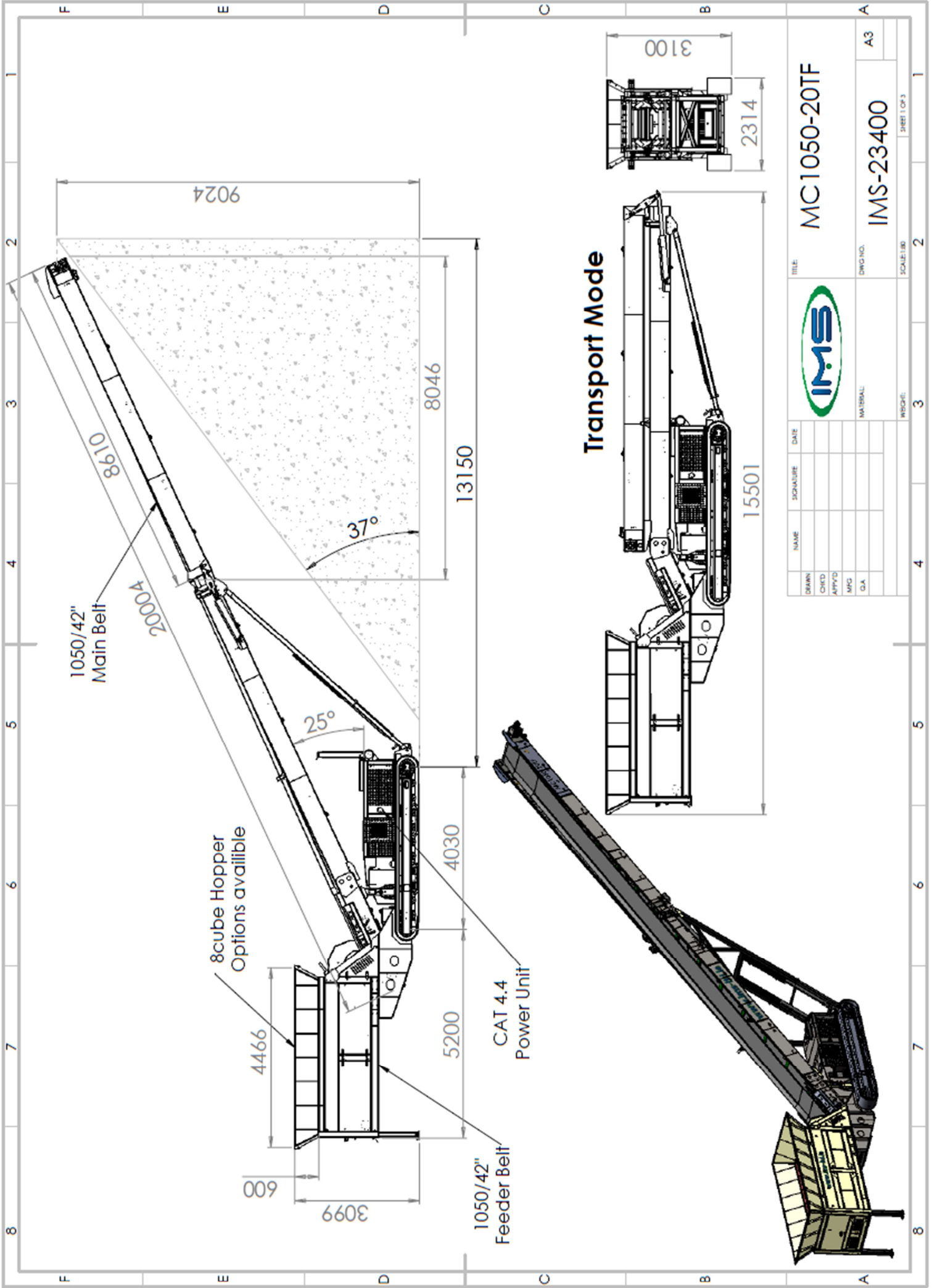
The undercarriage consists of the hydraulically operated crawler tracks together with an adjustable support trestle arrangement, which allows variation in both feed and discharge heights

Hydraulic Folding Mechanism

The folding mechanism of the conveyor head section allows for quick site set up and provides a flexible approach to transport of the unit. The hydraulic folding is designed so that the hydraulic cylinder piston rods are fully protected when the machine is operational

Emergency Stop System

Every MC1050-20TF track Conveyor is equipped from the factory with an emergency stop system that will render the plant inoperable when activated, providing added safety for the operator.



MC1050-20TF



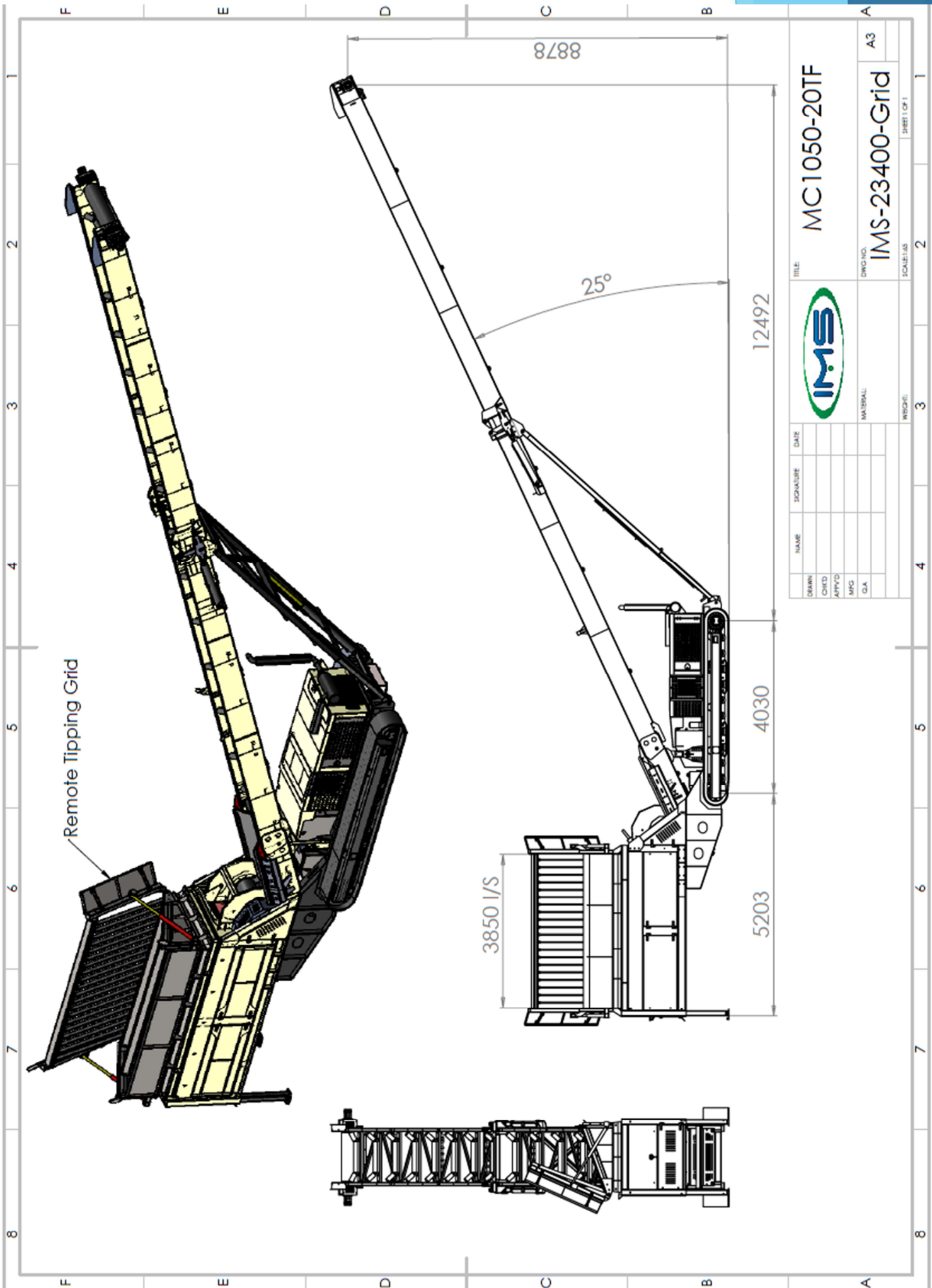
NAME	SIGNATURE	DATE

IMS-23400

DRAWN	CHECKED	APPROVED	DATE

SCALE: 1:80

TITLE	DWG. NO.	MATERIAL	WEIGHT	SHEET 1 OF 3



DRAWN		NAME	SIGNATURE	DATE
CHECKED				
APPROVED				
MFG				
Q.A.				


MC1050-20TF
 TITLE:

DWG NO. **IMS-23400-Grid**
 SCALE: AS SHOWN
 SHEET 1 OF 1

MATERIAL: _____
 WRCG#: _____
 WRCG#: _____
 WRCG#: _____



Standard Features

Detachable Hopper to allow for container transport –
Hopper in 20' Container, Conveyor in 40' Container

Extended foldable head section to give additional reach from tracks
13m from front of tracks to discharge point

1050mm (42") wide Feeder and Main Belt

127mm (5") Impact Rollers under Feeder

Mild Steel Replaceable Liner Plates in Hopper as standard

Helmet Door on front of Hopper to regulate flow of material

8 cubic metre capacity Hopper

Cartridge type Feeder – Can be removed easily for maintenance

User friendly hydraulic inclination (no pins required)

Crawler Track Movement

74 kw Diesel-Hydraulic Drive

1050mm (42") wide 3 ply belt in both Feeder and Discharge Conveyor

Hydraulic Folding on Head Section

Hydraulic Raise and Lower

Specifications

Operational Length	23.5M (77')
Operational Height	9.03M (30")
Loading Height	3.1M (10")
Hydraulic Tank Capacity	600 l (132 Gallon)
Diesel Fuel Capacity	275 l (61 Gallon)
Engine	Caterpillar Liquid Cooled
Engine Power	74kw (100HP)
Transport Width	2.314M (7' 8")
Transport Height	3.10M (10')
Transport Length	15.5M (51')
Total Weight	17000 kgs (37400 lbs)



Options

Remote Control Hydraulic Tipping Grid

Hardox 400 Wear Liners In Hopper

Rear Low Loading Hopper

Shredder on discharge from Feeder

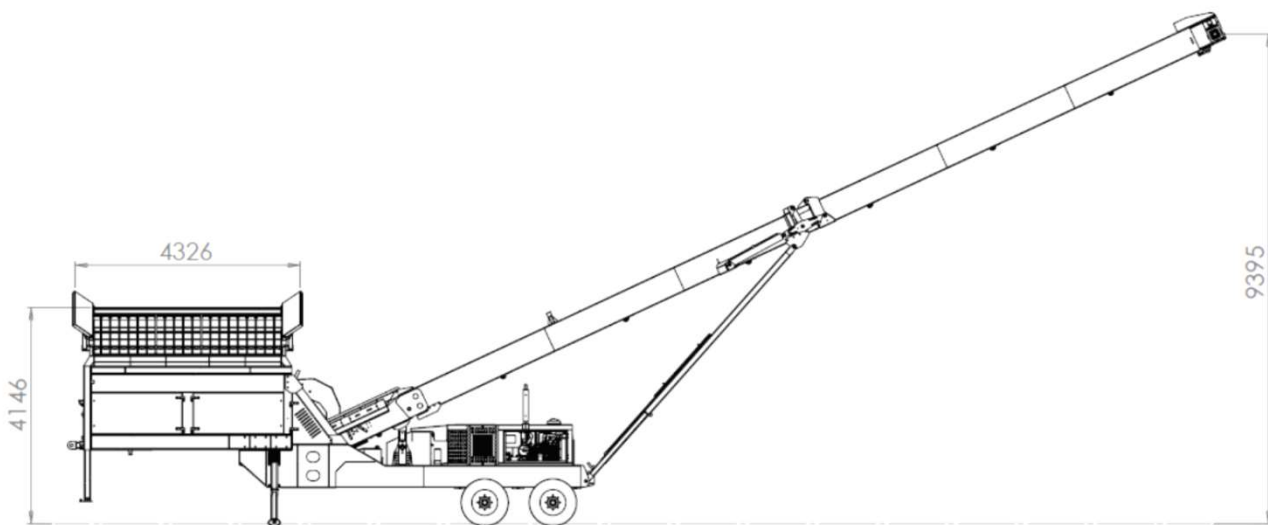
Heavy Duty Belt On Discharge Conveyor

Chevron Belt On Discharge Conveyor

Dual Power: Electric & Diesel / Hydraulic Power Unit

PVC Covers

Wheeled Version MC1050-20WF (Drawing below) includes road braking system to suit region



Due to Irish Manufacturing Services Limited's policy of continuing product improvements, Specifications are subject to change without notice or obligation. No representation is made that the products depicted herein comply with any laws, codes, rules, regulations or standards. Compliance is the responsibility of the user. Additional safety equipment may be required by the particular location and application of product.

Irish Manufacturing Services Limited

34 Dunroe Road, Clogher, Co. Tyrone, N. Ireland BT76 0DZ

Tel. +44 (0)28 8554 9656 E-mail info@ims-ltd.ie website; www.ims-ltd.ie



