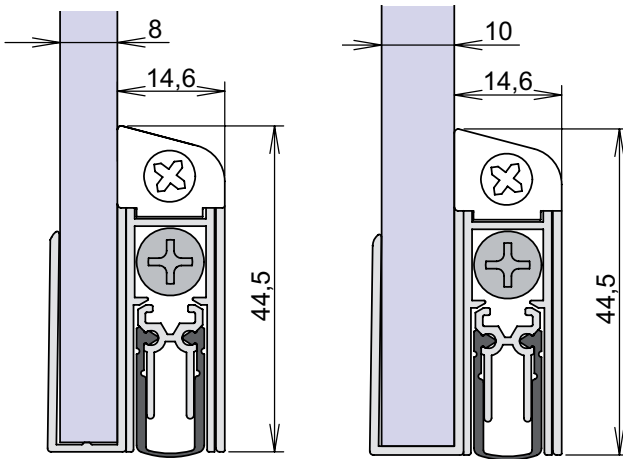


Montage / Installation

Schall-Ex GS-8 / GS-10 einseitig / single actuation



www.athmer.de
www.athmer.de
www.athmer.de

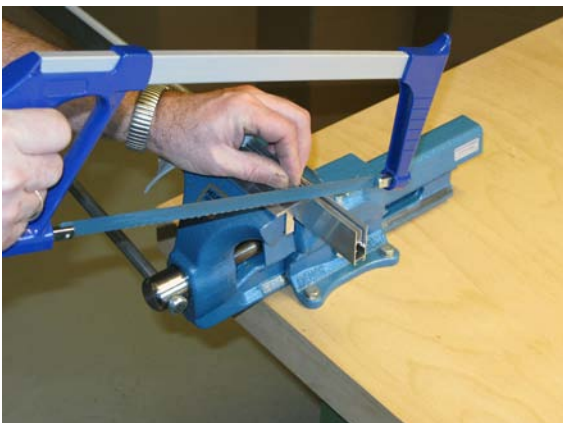
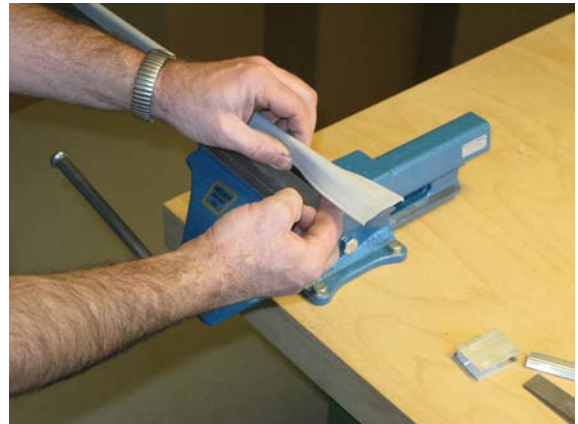
Athmer

Sophienhammer
59757 Arnsberg-Müschede

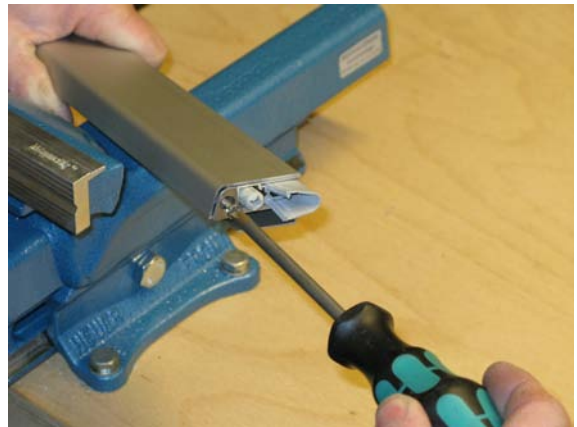
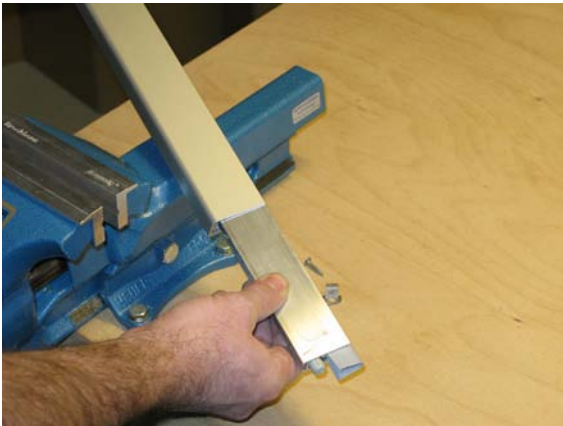
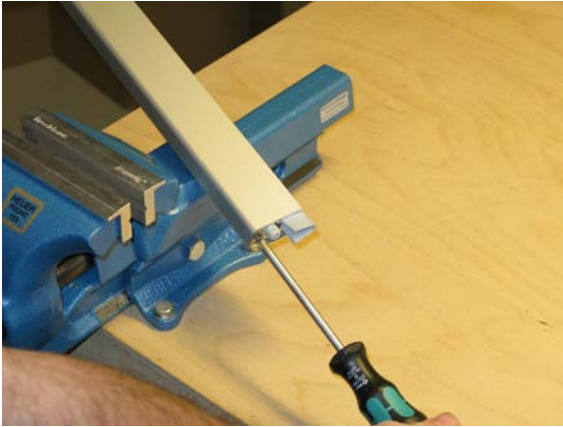
Tel. +49 2932 477-500
Fax +49 2932 477-100

info@athmer.de
www.athmer.de

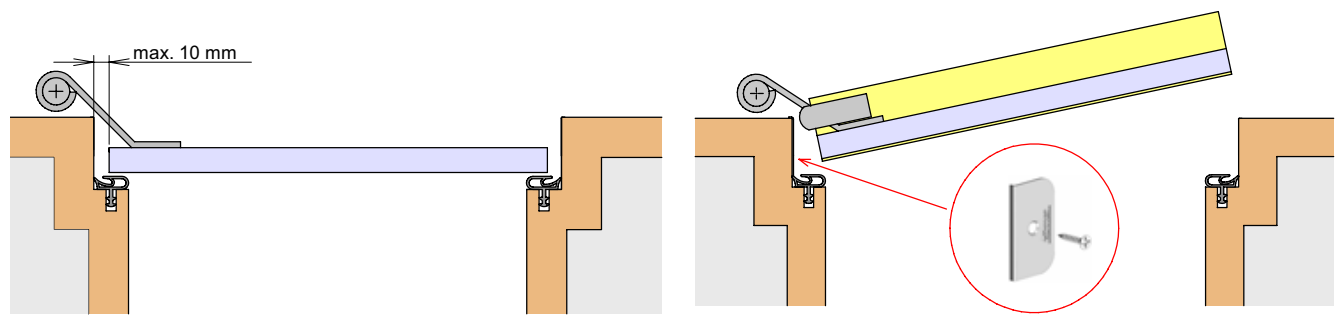
Kürzen / cutting to size



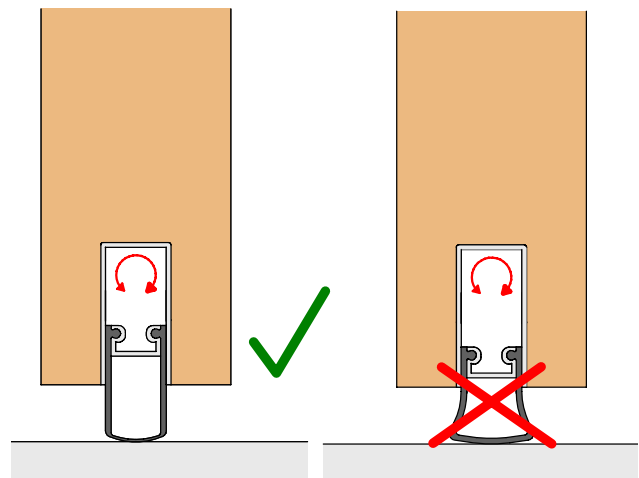
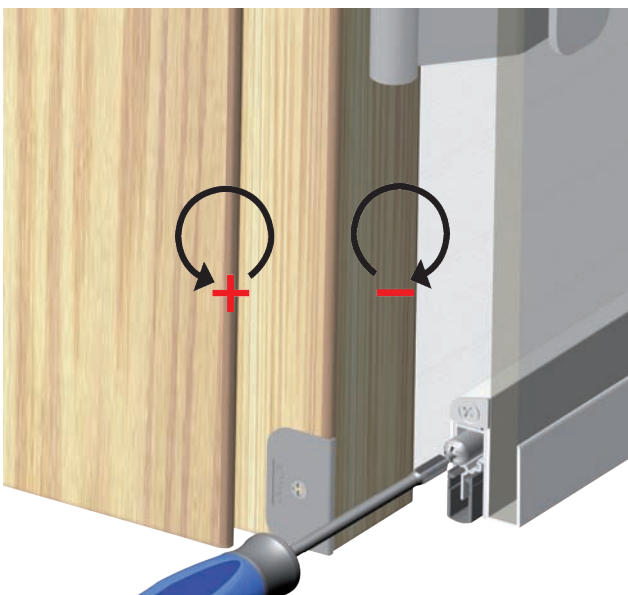
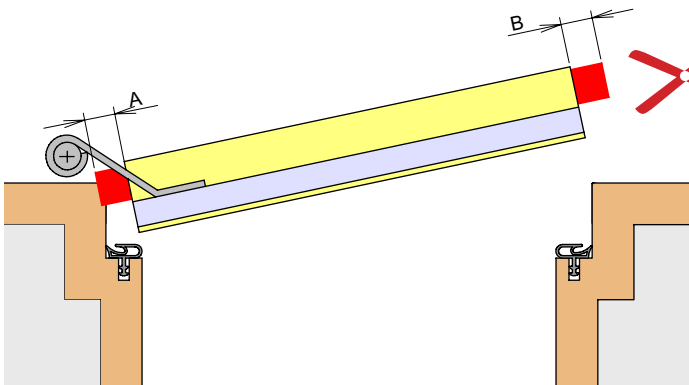
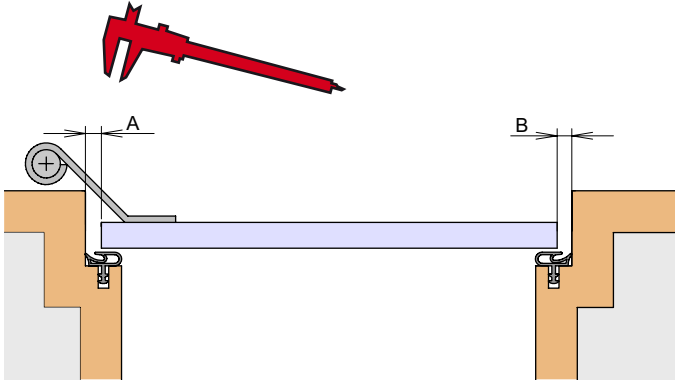
Kürzen / cutting to size



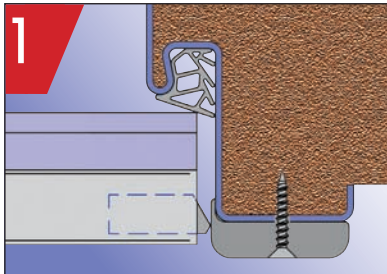
Anschlag / fixing



Einstellen / adjustment

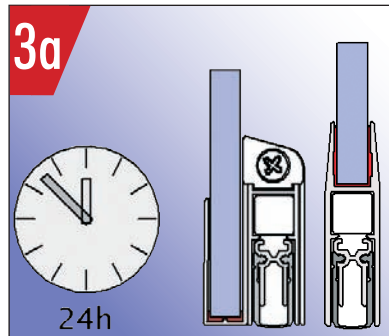
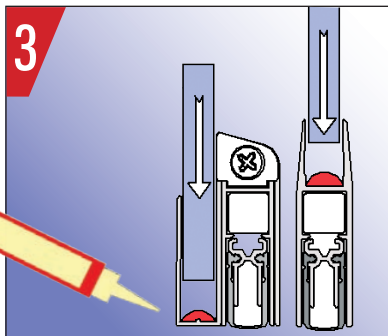
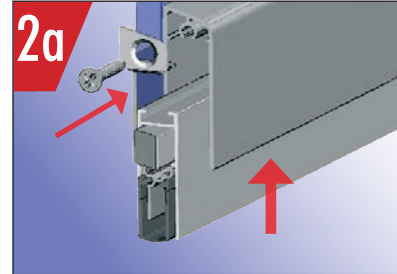
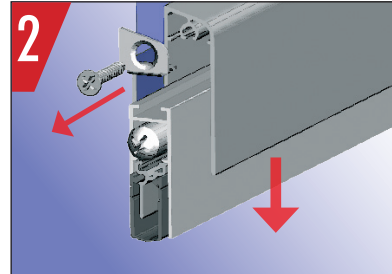


Montage / Installation



Option: Auflaufsockel

WECHSEL: DIN L - DIN R



Bei VSG nur vom Glashersteller
zugelassene Kleber und Dichtstoffe verwenden.