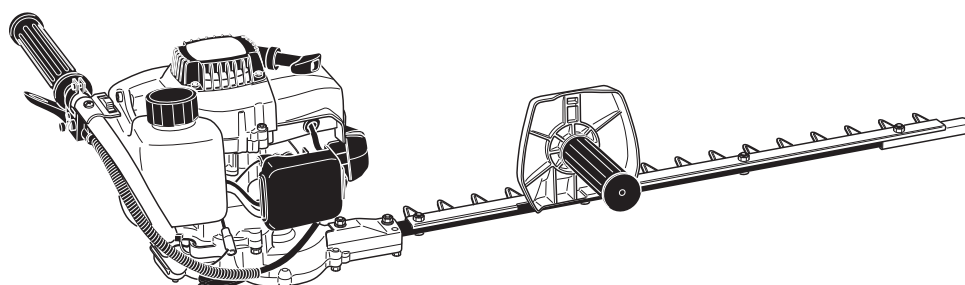
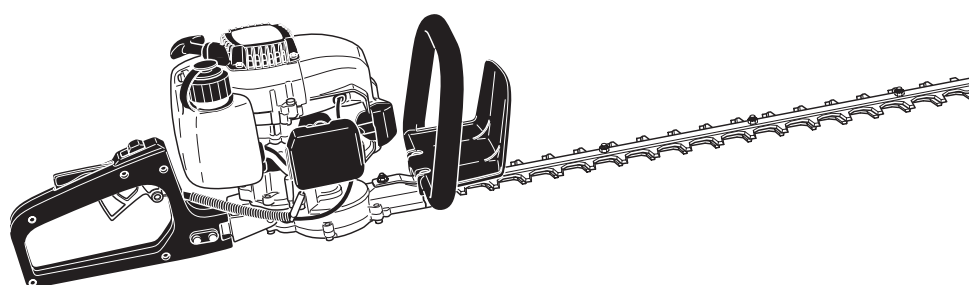


Spare Parts List

2006-03



HT-2045 D
HT-2062 E

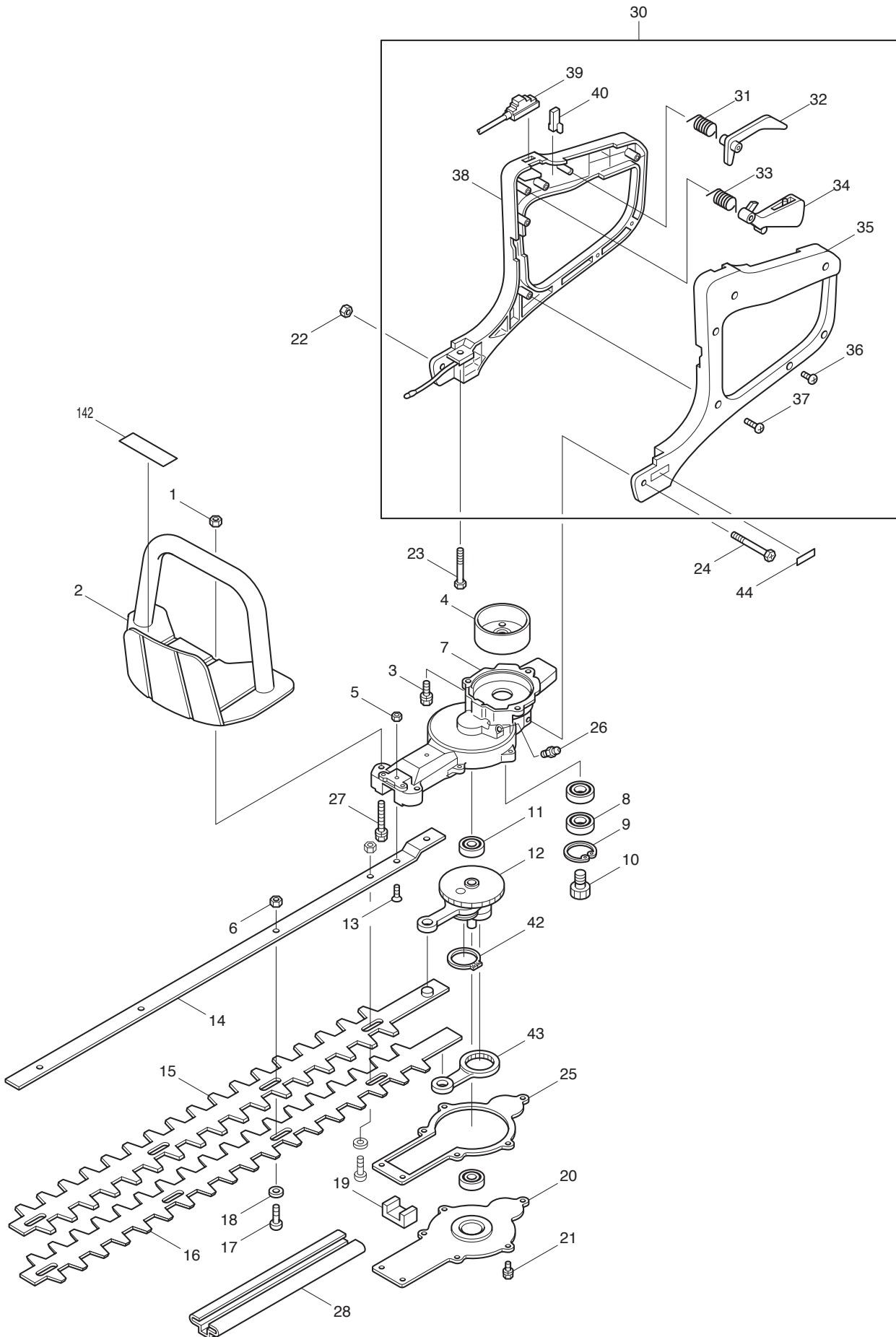
IMPORTANT! - To assure product SAFETY and RELIABILITY, repairs, maintenance or adjustments should be performed by DOLMAR Service Centers, or other qualified service organisations. Always use DOLMAR replacement parts.

DOLMAR



A member of the *Makita* Group

995 700 262 (GB)

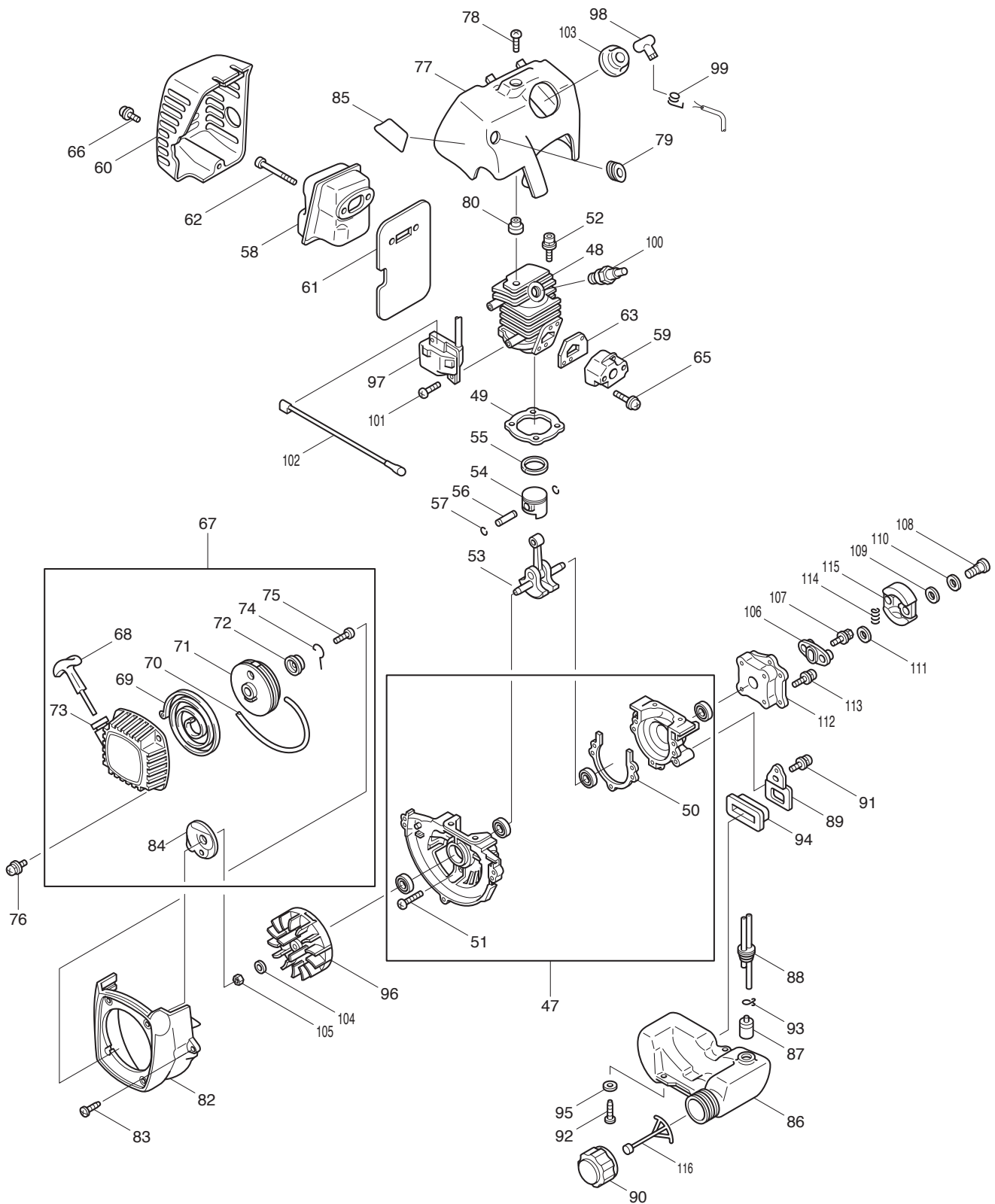


HT-2045 D

DOLMAR



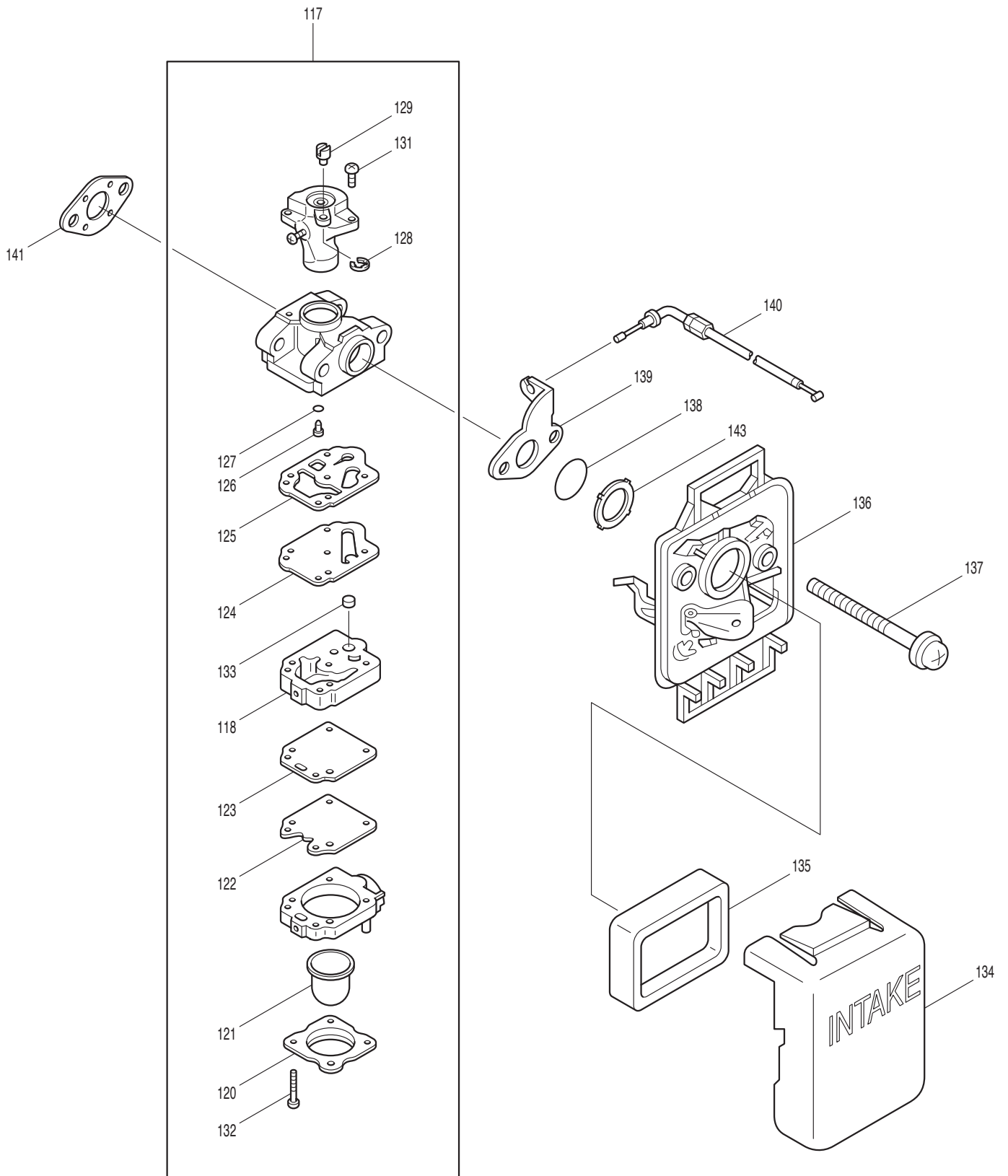
Page	Pos.	HT-2045 D	HT-2062 E	Part No.	Notes	Description	Specifications
1	1	2		374 150 060		HEX. NUT	M6
1	2	1		374 155 000		FRONT HANDLE	
1	3	2		374 054 061		(+)HEX. BOLT	M6X15
1	4	1		374 136 141		DRUM COMPLETE	
1	5	2		374 050 000		HEX. U-NUT	M5
1	6	4		374 164 060		HEX. U-NUT	M6
1	7	1		367 100 002		CRANK CASE	
1	8	2		374 354 060		BALL BEARING	6001 2RS
1	9	1		367 028 000		RETAINING RING	RTW-28
1	10	1		367 104 004		PINION GEAR	
1	11	2		367 006 080		BEARING	608ZZ
1	12	1		367 103 004		GEAR CRANK ASS'Y	
1	13	2		367 050 160		COUNTERSUNK HEAD SCREW	M5X16
1	14	1		367 103 002		BLADE SUPPORT BAR	
1	15	1		381 850 600	STANDARD EQUIPMENT	UPPER & LOWER BLADE	
1	16	1		381 850 600	STANDARD EQUIPMENT	UPPER & LOWER BLADE	
1	17	4		367 002 009		BLADE SLIDING SCREW	(L=19)
1	18	4		374 008 250		BLADE SLIDING WASHER	
1	19	1		367 112 004		FELT	
1	20	1		367 101 003		CASE LID	
1	21	7		367 050 120		(+)HEX. BOLT	M5X12
1	22	1		374 150 060		HEX. NUT	M6
1	23	1		374 055 064		(+)HEX. BOLT	M6X40
1	24	1		381 060 550		(+)HEX. BOLT	M6X55
1	25	1		367 102 003		CASE PACKING	
1	26	1		367 000 100		GREASING NIPPLE	
1	27	2		374 055 063		(+)HEX. BOLT	M6X35
1	28	1		367 002 089	STANDARD EQUIPMENT	BLADE COVER	
1	30	1		367 003 001		REAR HANDLE COMPLETE	INC. 31-40
1	31	1		367 023 004		TORSION SPRING	
1	32	1		367 107 004		LOCK LEVER	
1	33	1		367 024 004		LEAF SPRING	
1	34	1		367 106 004		THROTTLE LEVER	
1	35	1		367 104 001		REAR HANDLE (L)	
1	36	2		367 401 000		PAN HEAD SCREW	M4X10
1	37	4		367 401 500		PAN HEAD SCREW	M4X15
1	38	1		367 105 001		REAR HANDLE (R)	
1	39	1		367 088 004		SLIDE SWITCH	
1	40	1		367 108 004		STOPPER	
1	42	1		374 283 026		RETAINING RING	STW-26
1	43	2		367 113 004		ROD	
1	44	1		367 246 004		GREASE SEAL	
1	142	1		377 950 860		CAUTION LABEL	



HT-2045 D



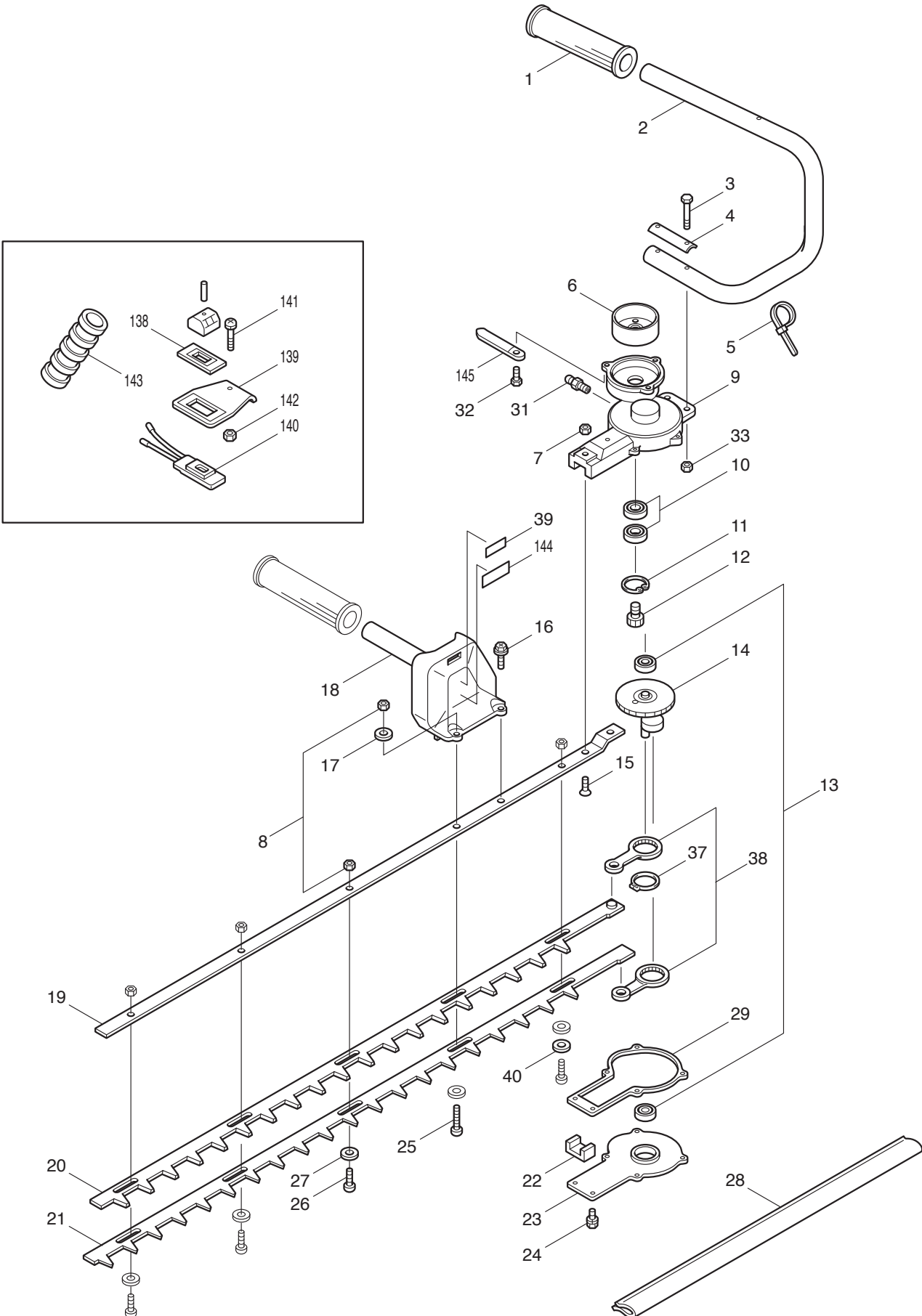
Page	Pos.	HT-2045 D	HT-2062 E	Part No.	Notes	Description	Specifications
2	47	1		367 100 600		CRANK CASE ASS'Y	INC. 50,51
2	48	1		367 150 060		CYLINDER	
2	49	1		382 150 030		CYLINDER GASKET	
2	50	1		318 150 040		CRANKCASE GASKET	
2	51	3		388 005 952		SCREW	M5X25
2	52	2		382 905 973		SOCKET HEAD BOLT	M5X20 (W/W&SW)
2	53	1		377 200 300		CRANK SHAFT COMPLETE	
2	54	1		381 250 080		PISTON	
2	55	1		367 250 060		PISTON RING	
2	56	1		367 250 050		PISTON PIN	
2	57	2		388 508 997		CLIP	
2	58	1		381 300 200		EXHAUST MUFFLER	
2	59	1		383 300 100		INSULATOR COMPLETE	
2	60	1		383 350 020		MUFFLER COVER	
2	61	1		381 350 030		MUFFLER INSULATOR	
2	62	2		388 905 960		SOCKET HEAD BOLT	M5X45
2	63	1		388 350 390		INSULATOR GASKET	
2	65	2		367 005 940		SCREW ASSEMBLY	
2	66	1		367 005 955		SCREW	M5X14
2	67	1		367 500 300		REWIND STARTER	INC. 68-75,84
2	68	1		388 500 402		HANDLE	
2	69	1		381 500 205		SPIRAL SPRING	
2	70	1		388 501 602		STARTER ROPE	
2	71	1		383 500 203		REEL	
2	72	1		367 500 211		COLLAR	
2	73	1		388 500 104		DAMPER	
2	74	1		367 500 210		SWING ARM	
2	75	1		367 500 206		SET SCREW	
2	76	4		367 370 412		SCREW ASSEMBLY	
2	77	1		381 550 090		CYLINDER COVER	
2	78	1		374 005 949		SCREW	
2	79	1		374 750 030		GROMMET	
2	80	1		374 350 300		SPACER	
2	82	1		381 550 150		BLOWER HOUSING	
2	83	3		381 005 998		TAPPING SCREW	M5X20
2	84	1		367 550 000		PULLEY	
2	85	1		381 950 810		TRADE MARK LABEL "DOLMAR"	
2	86	1		367 601 100		FUEL TANK COMPLETE	
2	87	1		382 650 390		FILTER	
2	88	1		367 114 995		TUBE	
2	89	1		388 650 020		FUEL TANK PLATE	
2	90	1		374 605 800		FUEL TANK CAP	
2	91	1		367 360 510		SCREW ASSEMBLY	
2	92	2		381 150 070		TAPPING SCREW	
2	93	1		381 105 999		HOSE CLAMP	
2	94	1		383 650 030		DAMPER	
2	95	2		381 100 500		WASHER	M5
2	96	1		381 700 301		FLYWHEEL	
2	97	1		367 700 302		COIL	
2	98	1		374 500 994		PLUG CAP	
2	99	1		377 400 993		PLUG CAP SPRING	
2	100	1		367 014 975		SPARK PLUG	BM4A
2	101	2		367 004 992		SCREW ASS'Y	M4X20
2	102	1		367 701 800		WIRE COMPLETE	
2	103	1		374 750 000		PLUG CAP COVER	
2	104	1		368 100 800		WASHER	
2	105	1		367 308 999		LOCK NUT	
2	106	1		374 850 010		HOLDER	
2	107	1		383 200 605		BOLT ASS'Y	W/W&SW
2	108	2		381 250 040		CLUTCH BOLT	
2	109	2		368 100 800		WASHER	
2	110	2		383 008 991		WASHER	M8
2	111	2		374 250 060		WASHER	
2	112	1		374 118 124		SPACER	
2	113	4		374 005 945		SCREW	M5X18
2	114	1		367 800 101		CLUTCH SPRING	
2	115	2		367 800 401		CLUTCH SHOE	
2	116	1		374 606 700		STRAP	



HT-2045 D



Page	Pos.	HT-2045 D	HT-2062 E	Part No.	Notes	Description	Specifications
3	117	1		381 601 200		CARBURETOR	INC. 118-129,131-133
3	118	1		374 604 613		PUMP BODY ASS'Y	
3	120	1		374 604 605		PRIMER PUMP COVER	
3	121	1		381 600 115		PRIMER PUMP	
3	122	1		381 600 525		METERING DIAPHRAGM ASS'Y	
3	123	1		381 604 604		METERING DIAPHRAGM GASKET	
3	124	1		381 600 104		PUMP DIAPHRAGM	
3	125	1		381 600 103		PUMP GASKET	
3	126	1		367 602 402		JET	
3	127	1		381 600 101		O RING	
3	128	1		381 600 512		RING	
3	129	1		381 601 804		SWIVEL	
3	131	2		388 600 803		PAN HEAD SCREW	
3	132	4		381 604 601		PUMP COVER SCREW	
3	133	1		381 600 401		INLET SCREEN	
3	134	1		374 300 403		AIR CLEANER COVER	
3	135	1		374 300 401		AIR FILTER	
3	136	1		374 300 402		AIR CLEANER HOUSING	
3	137	2		367 330 560		SCREW ASS'Y	M5X60(W/W)
3	138	1		374 606 100		O RING	
3	139	1		374 650 010		CABLE BRACKET	
3	140	1		367 001 984		CONTROL CABLE	
3	141	1		381 350 280		SPACER GASKET	
3	143	1		374 650 120		GASKET	
3	* A01	1		377 900 100	STANDARD EQUIPMENT	TOOL KIT	
	* NO PICT.						

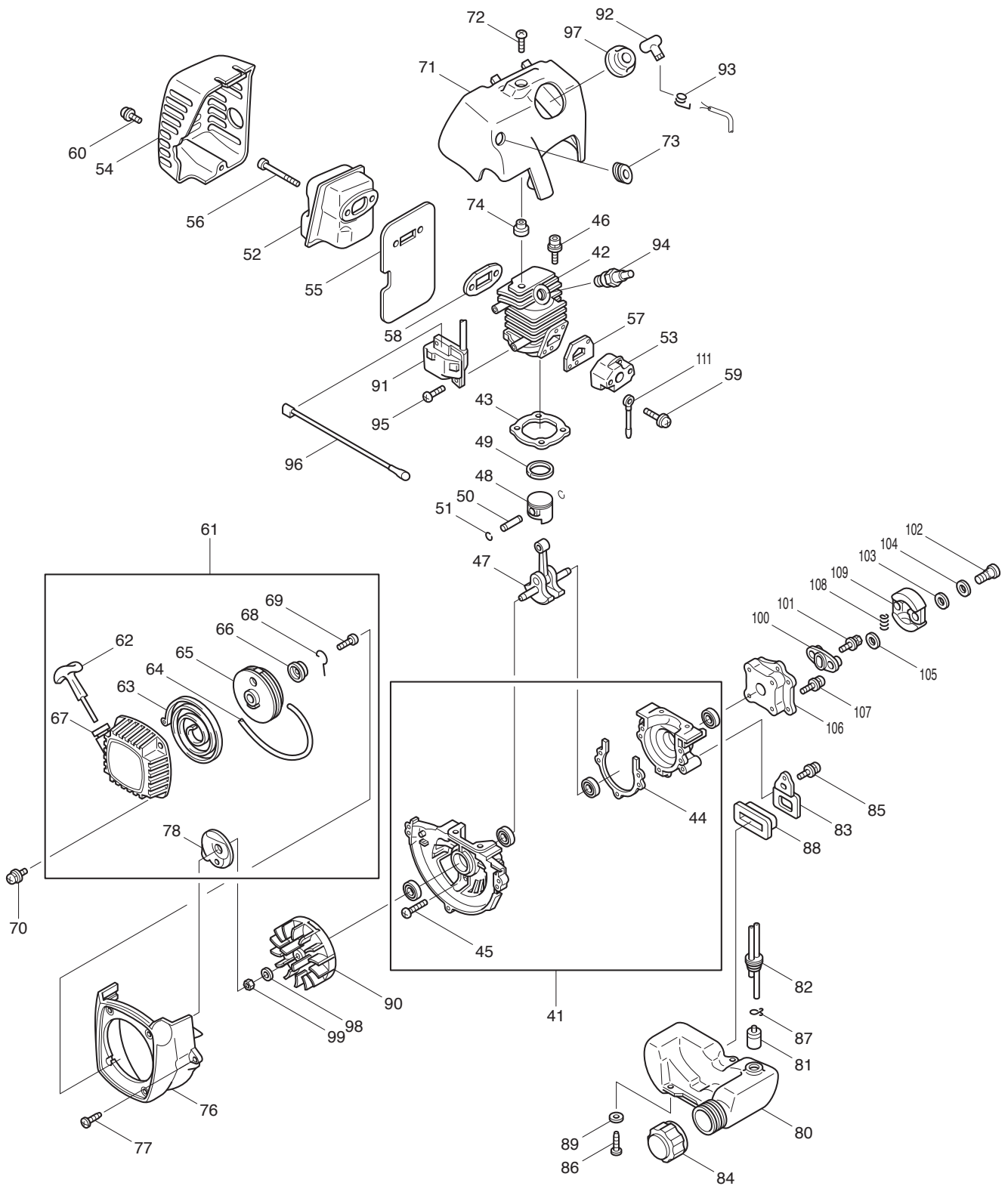


HT-2062 E

DOLMAR



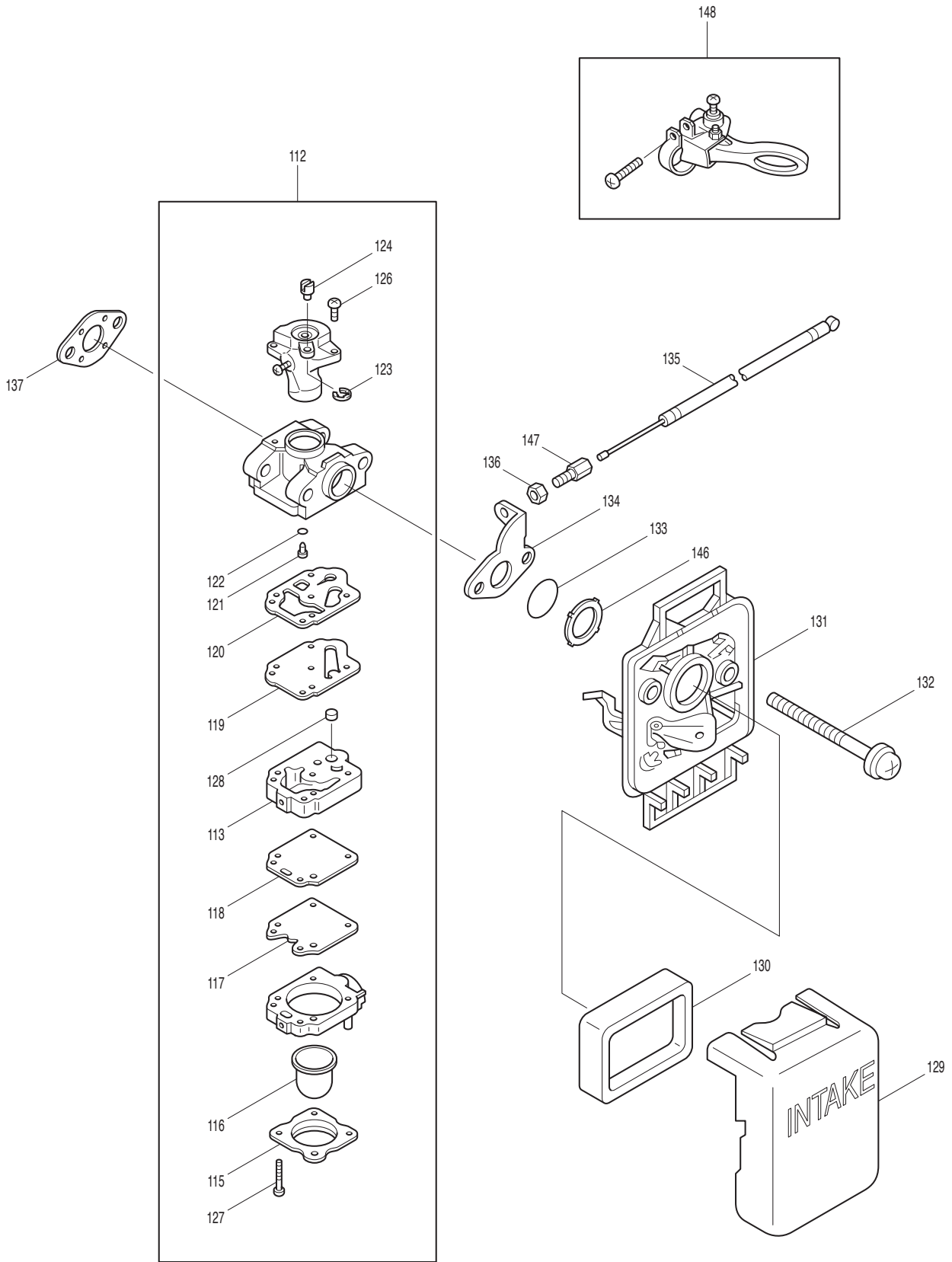
Page	Pos.	HT-2045 D	HT-2062 E	Part No.	Notes	Description	Specifications
4	1		2	374 008 345		GRIP	
4	2		1	367 114 003		HANDLE (LEFT)	
4	3		2	367 050 251		HEX. BOLT	
4	4		1	374 136 103		HANDLE FITTING	
4	5		1	367 550 030		BAND	
4	6		1	374 136 141		DRUM COMPLETE	
4	7		2	374 050 000		HEX. U-NUT	M5
4	8		5	374 164 060		HEX. U-NUT	M6
4	9		1	381 100 002		CRANK CASE	
4	10		2	374 354 060		BALL BEARING	6001 2RS
4	11		1	367 028 000		RETAINING RING	RTW-28
4	12		1	367 104 004		PINION GEAR	
4	13		2	367 006 080		BEARING	608ZZ
4	14		1	367 103 004		GEAR CRANK ASS'Y	
4	15		2	367 050 160		COUNTERSUNK HEAD SCREW	M5X16
4	16		1	367 060 181		(+) HEX. BOLT	
4	17		1	367 060 104		WASHER	
4	18		1	374 136 190		HANDLE (RIGHT)	
4	19		1	367 105 009		BLADE SUPPORT BAR	
4	20		1	381 850 560	STANDARD EQUIPMENT	UPPER BLADE	
4	21		1	381 850 580	STANDARD EQUIPMENT	LOWER BLADE	
4	22		1	367 112 004		FELT	
4	23		1	374 101 003		CASE LID	
4	24		6	367 050 120		(+)HEX. BOLT	M5X12
4	25		1	367 004 009		BLADE SLIDING SCREW	
4	26		4	367 002 009		BLADE SLIDING SCREW	L=19
4	27		5	374 008 250		BLADE SLIDING WASHER	
4	28		1	367 112 009	STANDARD EQUIPMENT	BLADE COVER	
4	29		1	381 102 003		CASE PACKING	
4	31		1	367 000 100		GREASING NIPPLE	
4	32		3	374 054 061		(+)HEX. BOLT	M6X15
4	33		2	367 050 000		NUT	M5
4	37		1	374 283 026		RETAINING RING	STW-26
4	38		2	367 113 004		ROD	
4	39		1	367 246 004		GREASE SEAL	
4	40		1	367 060 000		WASHER	
4	138		1	381 145 004		LABEL	
4	139		1	367 115 000		SWITCH STAY	
4	140		1	367 373 000		SWITCH ASS'Y	
4	141		1	367 050 250		SCREW	M5X25 (W/SW)
4	142		1	367 050 000		NUT	M5
4	143		1	367 137 004		TUBE	
4	144		1	377 950 860		CAUTION LABEL	
4	145		1	374 605 998		CLAMP	



HT-2062 E



Page	Pos.	HT-2045 D	HT-2062 E	Part No.	Notes	Description	Specifications
5	41		1	367 100 600		CRANK CASE ASS'Y	INC. 44,45
5	42		1	367 150 060		CYLINDER	
5	43		1	382 150 030		CYLINDER GASKET	
5	44		1	318 150 040		CRANKCASE GASKET	
5	45		3	388 005 952		SCREW	M5X25
5	46		2	382 905 973		SOCKET HEAD BOLT	M5X20(W/W&SW)
5	47		1	377 200 300		CRANK SHAFT COMPLETE	
5	48		1	381 250 080		PISTON	
5	49		1	367 250 060		PISTON RING	
5	50		1	367 250 050		PISTON PIN	
5	51		2	388 508 997		CLIP	
5	52		1	381 300 200		EXHAUST MUFFLER	
5	53		1	383 300 100		INSULATOR COMPLETE	
5	54		1	383 350 020		MUFFLER COVER	
5	55		1	381 350 030		MUFFLER INSULATOR	
5	56		2	388 905 960		SOCKET HEAD BOLT	M5X45
5	57		1	388 350 390		INSULATOR GASKET	
5	58		1	377 350 020		GASKET (MUFFLER)	
5	59		2	367 005 940		SCREW ASSEMBLY	
5	60		1	367 005 955		SCREW	M5X14
5	61		1	367 500 300		REWIND STARTER	INC. 62-69,78
5	62		1	388 500 402		HANDLE	
5	63		1	381 500 205		SPIRAL SPRING	
5	64		1	388 501 602		STARTER ROPE	
5	65		1	383 500 203		REEL	
5	66		1	367 500 211		COLLAR	
5	67		1	388 500 104		DAMPER	
5	68		1	367 500 210		SWING ARM	
5	69		1	367 500 206		SET SCREW	
5	70		4	367 370 412		SCREW ASSEMBLY	
5	71		1	381 550 090		CYLINDER COVER	
5	72		1	374 005 949		SCREW	
5	73		1	374 750 030		GROMMET	
5	74		1	374 350 300		SPACER	
5	76		1	381 550 150		BLOWER HOUSING	
5	77		3	381 005 998		TAPPING SCREW	M5X20
5	78		1	367 550 000		PULLEY	
5	80		1	367 601 100		FUEL TANK COMPLETE	
5	81		1	382 650 390		FILTER	
5	82		1	367 114 995		TUBE	
5	83		1	388 650 020		FUEL TANK PLATE	
5	84		1	374 605 800		FUEL TANK CAP	
5	85		1	367 360 510		SCREW ASSEMBLY	
5	86		2	381 150 070		TAPPING SCREW	
5	87		1	119 114 030		HOSE CLAMP	
5	88		1	383 650 030		DAMPER	
5	89		2	381 100 500		WASHER	M5
5	90		1	381 700 301		FLYWHEEL	
5	91		1	367 700 302		COIL	
5	92		1	374 500 994		PLUG CAP	
5	93		1	377 400 993		PLUG CAP SPRING	
5	94		1	367 014 975		SPARK PLUG	BM4A
5	95		2	367 004 992		SCREW ASS'Y	M4X20
5	96		1	367 701 800		WIRE COMPLETE	
5	97		1	374 750 000		PLUG CAP COVER	
5	98		1	368 100 800		WASHER	
5	99		1	367 308 999		LOCK NUT	
5	100		1	374 850 010		HOLDER	
5	101		1	383 200 605		BOLT ASS'Y	W/W&SW
5	102		2	381 250 040		CLUTCH BOLT	
5	103		2	368 100 800		WASHER	
5	104		2	383 008 991		WASHER	M8
5	105		2	374 250 060		WASHER	
5	106		1	374 118 124		SPACER	
5	107		4	374 005 945		SCREW	M5X18
5	108		1	367 800 101		CLUTCH SPRING	
5	109		2	367 800 401		CLUTCH SHOE	
5	111		1	381 550 020		WIRE	



HT-2062 E

DOLMAR



Page	Pos.	HT-2045 D	HT-2062 E	Part No.	Notes	Description	Specifications
6	112		1	381 601 200		CARBURETOR	INC. 113-124,126-128
6	113		1	374 604 613		PUMP BODY ASS'Y	
6	115		1	374 604 605		PRIMER PUMP COVER	
6	116		1	381 600 115		PRIMER PUMP	
6	117		1	381 600 525		METERING DIAPHRAGM ASS'Y	
6	118		1	381 604 604		METERING DIAPHRAGM GASKET	
6	119		1	381 600 104		PUMP DIAPHRAGM	
6	120		1	381 600 103		PUMP GASKET	
6	121		1	367 602 402		JET	
6	122		1	381 600 101		O RING	
6	123		1	381 600 512		RING	
6	124		1	381 601 804		SWIVEL	
6	126		2	388 600 803		PAN HEAD SCREW	
6	127		4	381 604 601		PUMP COVER SCREW	
6	128		1	381 600 401		INLET SCREEN	
6	129		1	374 300 403		AIR CLEANER COVER	
6	130		1	374 300 401		AIR FILTER	
6	131		1	374 300 302		AIR CLEANER HOUSING CPL.	
6	132		2	367 330 560		SCREW ASS'Y	M5X60(W/W)
6	133		1	374 606 100		O RING	
6	134		1	374 650 010		CABLE BRACKET	
6	135		1	367 004 990		CONTROL CABLE	
6	136		1	381 600 545		CABLE ADJUST NUT	
6	137		1	381 350 280		SPACER GASKET	
6	146		1	374 650 120		GASKET	
6	147		1	381 600 801		CABLE ADJUST SCREW	
6	148		1	367 500 400		CONTROL LEVER	
6	* A01		1	377 900 100	STANDARD EQUIPMENT	TOOL	
	* NO PICT.						

HT-2045 D	1	Handle, gear, shear blade
	2	Engine, starter, fuel tank
	3	Carburetor, air filter, tool kit
HT-2062 E	4	Handle, gear, shear blade
	5	Engine, starter, fuel tank
	6	Carburetor, air filter, tool kit

Key to symbols	
<p>⇒ 1999999 2000000 ⇒ 2003.04 ⇒ TI 2003/07 Acc. = { m Corr.</p>	<p>Production to serial number New part from serial number New part from Year / Month See Technical Information Year / No. Accessories (not included in the delivery inventory) No standard execution, may be used Contains item number Sold by the meter Error correction</p>
	Specifications subject to change without notice